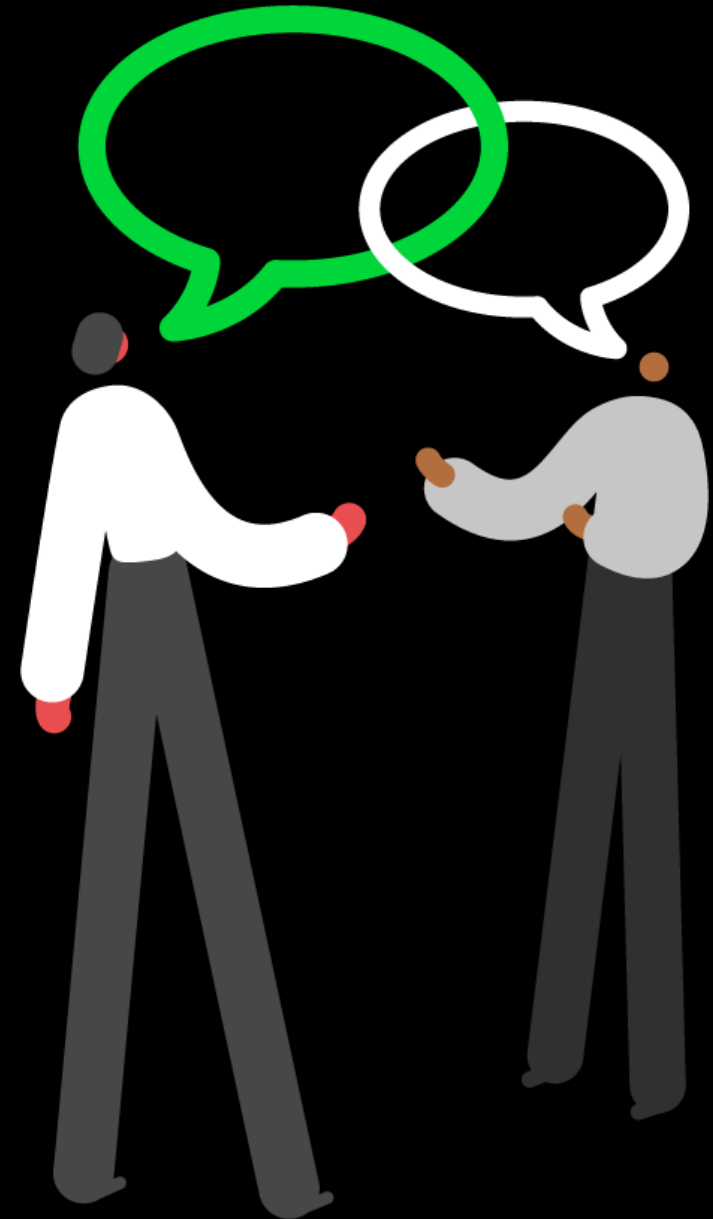


Sage 200 2024 R2

What's New

October 2024



What's New Guide

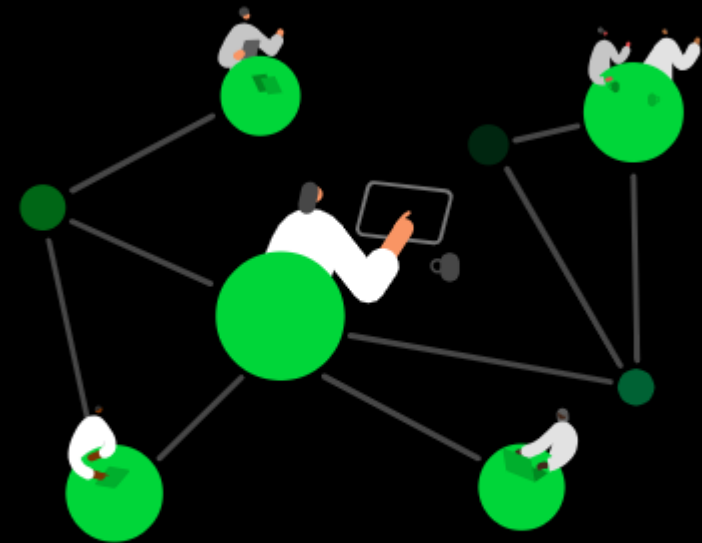
Information on the new features for Sage 200 Professional, Standard and Sage for Education

Our progressive strategy is constantly evolving, and each new release is built using customer feedback; ensuring customers' needs drive our product [roadmap](#).

We're focused on a number of key aspects:

- Simplifying your business processes and increasing efficiency,
- Modernising the software with greater flexibility of access to enhance productivity

Introducing Sage Network



Most of accounting and finance still runs on paper, emails, PDFs and painful manual processes

Vendor's AR (Accounts Receivable)

Customer's AP (Accounts Payable)



Invoices | Statements | Credit Note | Account Balances | Contact Information | Payment Terms |

AR Automation For Sage 200

Make Getting Paid From Repeat Invoices Simple and Painless

The screenshot shows the Sage Connect 'My Network' interface. On the left, there is a 'Next Steps' sidebar with a 'See History' button. The main area is titled 'My Network' and shows a list of 450 customers. The list has columns for Customer, Network Status, Messaging, Portal View, Transaction Currency, and Email. The network status for each customer is color-coded: Connected (green), Available (purple), and Invited (blue). There are also filter buttons at the top, such as 'Account Balance', 'Overdue', 'Not Visited', 'No Link Sent', 'Exclude Customers with Recent Links', and 'Missing Email Addresses'. A 'Send Message' button is visible at the top right of the list.

Customer	Network Status	Messaging	Portal View	Transaction Currency	Email
Bloom Corp	Connected	🗉	👁️	USD	Primary alexander.thornfield@bloomcorp.com
Moonlit Melodies	Available	🗉	👁️	USD	charlotte.harrington@crimsonconsults.co.uk
Serene Serenades	Invited	🗉	👁️	USD	henry.abernathy@eliteventures.com
Crystal Crest	Available	🗉	👁️	Multi	eleanor.cattermole@harmonyenterprises.co.uk
Velvet Valley Ventures	Available	🗉	👁️	USD	Primary eleanor.cattermole@harmonyenterprises.co.uk
Opulent Oasis	Available	🗉	👁️	USD	oliverfairchild@silverstrategies.co.uk
Radiant Reflections	Available	🗉	👁️	USD	amelia.pembroke@vitalitywellness.com
Gleaming Galaxy	Available	🗉	👁️	USD	william.hargrave@quantumindustries.co.uk
Secretive Solstice	Available	🗉	👁️	USD	matilda.farnsworth@luxinteriors.co.uk
Ethereal Echo	Connected	🗉	👁️	USD	edward.brimley@stellarfinanciat.com
Enchanting Ember	Invited	🗉	👁️	USD	beatrice.ashcroft@blossomretreats.co.uk

1

Get Paid Faster With Less Effort

Avoid payment delays with automated customer onboarding and verification, ensuring invoices are accurate from the start.

2

Stay on Top of Cash Flow

Identify customers affecting your cash flow with a 24/7 view of all outstanding invoices, amounts due, and payment status.

3

Simplify and Automate Collections

Schedule, send, and track payment reminders and invoicing communications, to avoid manual follow-ups and digging through emails for past communications.

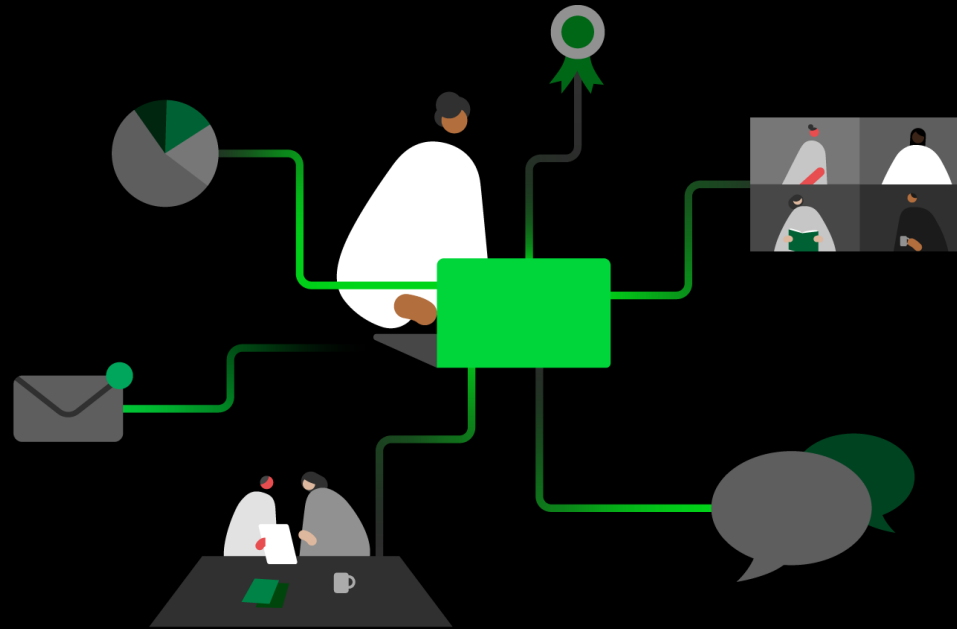
4

Start Quickly Without Long, Complex, or Costly Implementations:

Get set up using a standardised ERP connector that seamlessly integrates with your accounting system.

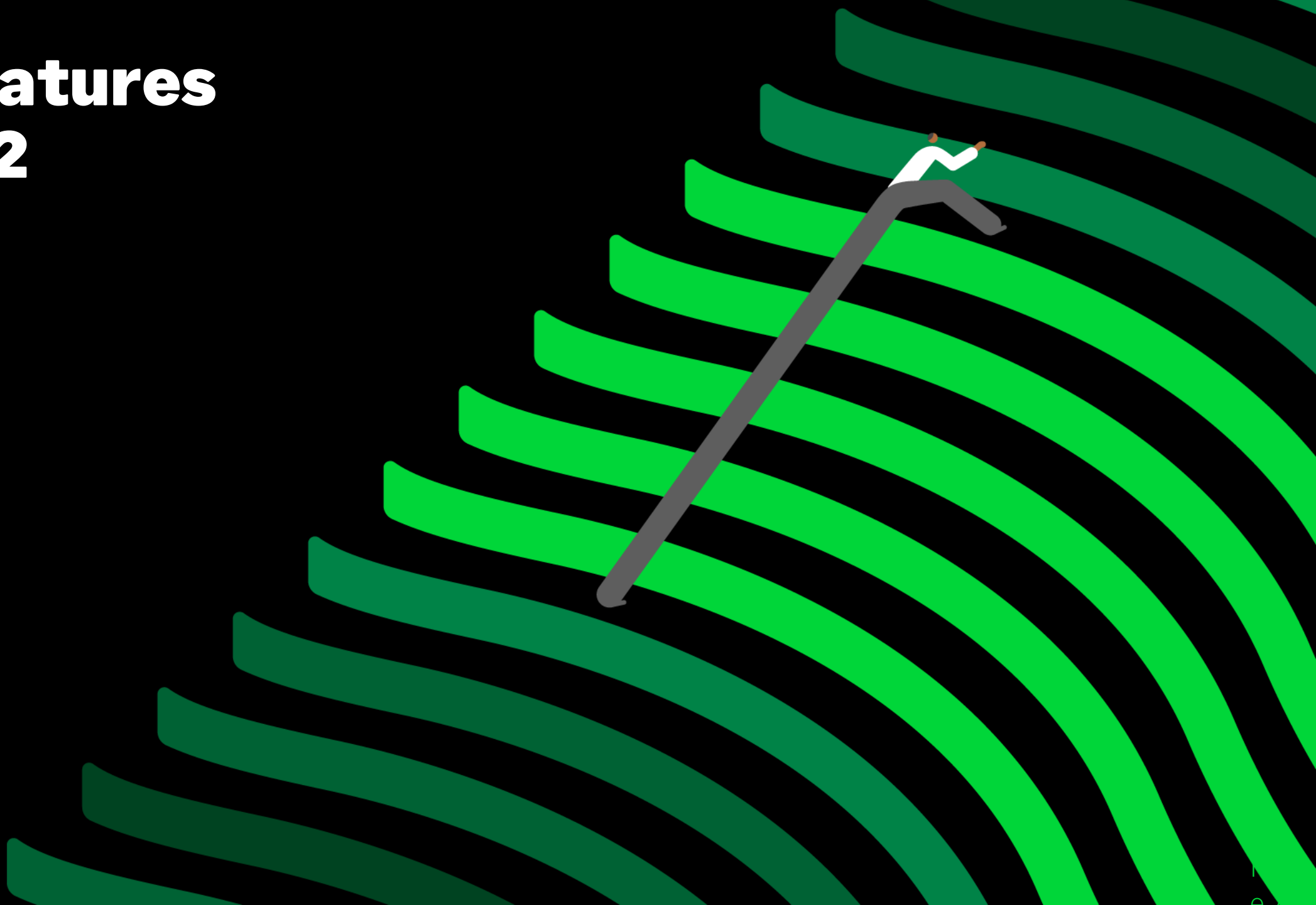
AR Automation For Sage 200

Join our Sage 200
Professional and Sage
Connect Early Adopter
Program for Customers



Customers can sign up for **exclusive early access** here!

New Features 2024 R2



You Said, We Listened

Our customers have requested the following features...



Amend Requested and Promised Dates

Enhance efficiency and accuracy with the ability to modify requested and promised dates on Sales Orders, Quotes, (desktop and web Screens), and Proformas (desktop only). Instead of manually updating each line item, our new feature allows for quick, cascading date changes, significantly reducing data entry time.



Increased Reference and Second Reference Field Lengths

Originally driven by the need to accommodate longer vendor invoice numbers, such as those from Amazon, this enhancement ensures businesses can avoid abbreviating critical information, reducing errors and improving data clarity.

If there's something you'd like to see in Sage 200, tell us about it on the [Sage 200 UKI Ideas Portal](#).

Sage

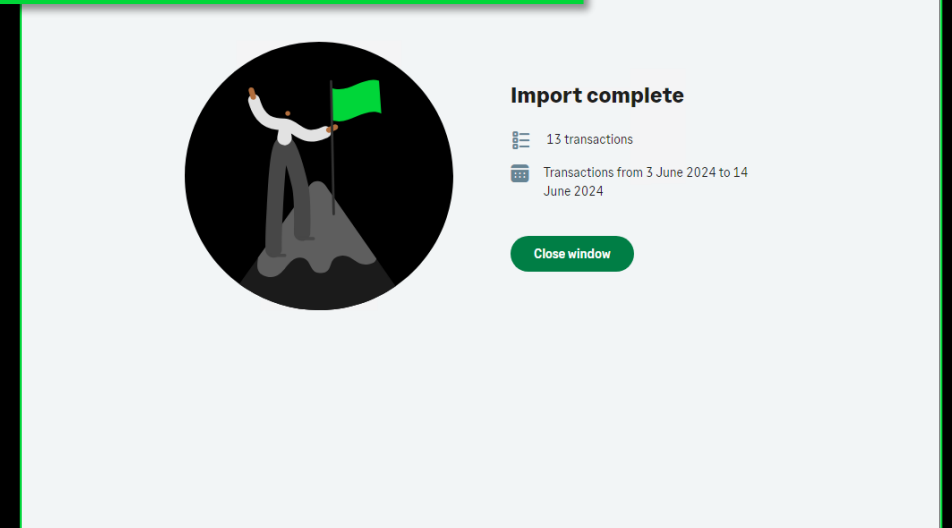
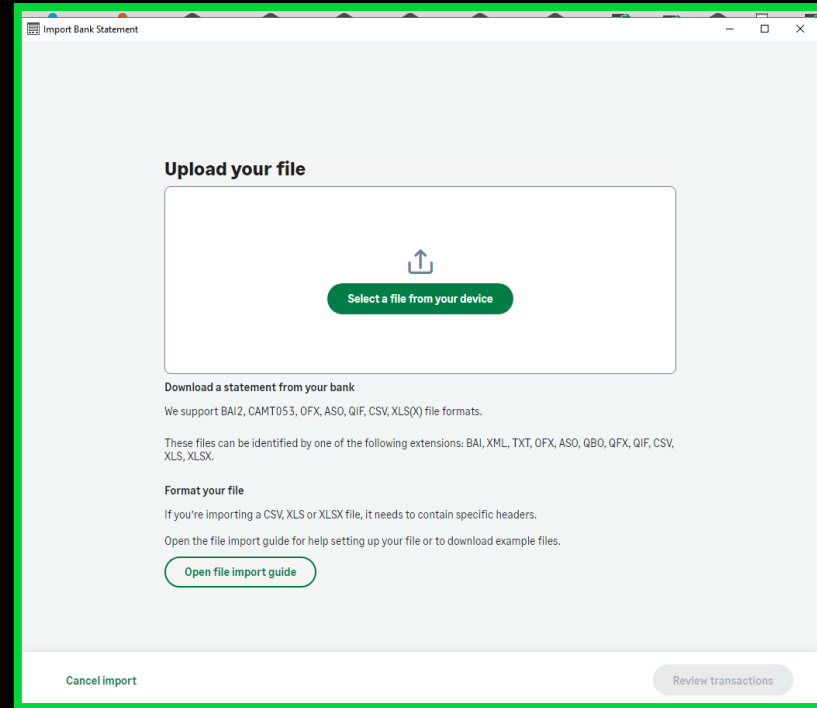


Bank Feeds

Transaction Import

Customers can import bank transactions for reconciliation purposes.

This new feature ensures that all transactions are entered accurately and on time, giving businesses better control over cash flow, financial position, and security by identifying any discrepancies quickly.



Updates



Scalable Model Architecture for Sage 200

Sage 200's model architecture is designed to provide your business with a flexible, scalable, and high-performance framework that adapts to your evolving needs

Variants: Professional



Celebrate business growth with greater business management

Whether you need greater functionality, are looking for a true cloud-native solution, or have a greater choice of integrated applications, Sage 200 is the next step for a successful and growing business. To support your move to Sage 200 Standard, we've created a simple migration that is secure, quick, and easy to move your data from Sage 50.



Make sure everything runs smoothly

By identifying and addressing issues early, we provide a more reliable and stable product experience, minimising downtime and costly disruptions



Changes to URLs for Opayo (formerly Sagepay)

Variants: Standard & Education

Further Updates



SPC Azure Image

Deploying onto the latest images unlocks a wider number of benefits including keeping up to date with Microsoft product lifecycle.

Variants: SPC



Streamlined Bank Feeds Onboarding with Modern Authentication

A technical upgrade to align Sage 200's bank feeds onboarding journey with the modern authentication method already in use for Invoice Payments. This change modernises your experience and ensures continued functionality without disruption.



Stay protected with our security updates

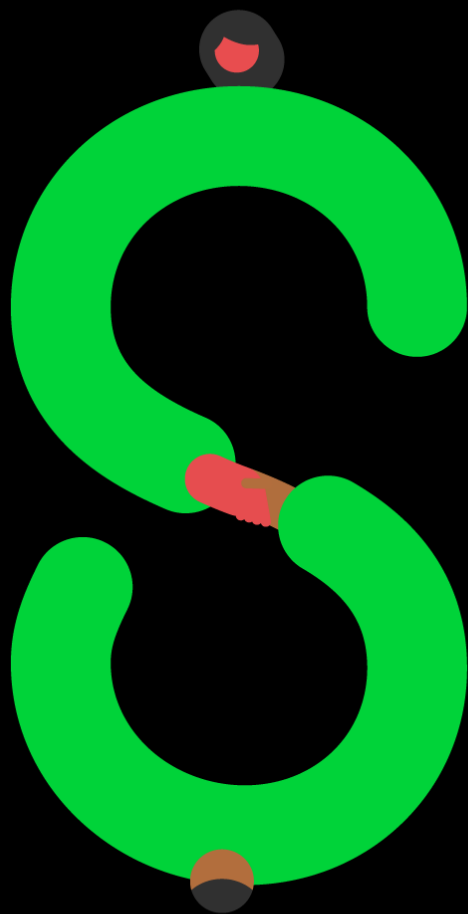
By staying up to date with our security enhancements, you can confidently operate knowing your Sage 200 environment is secure and resilient against emerging threats



Barclays Corporate Bank Feeds

As voted by our customers, the Barclays Corporate Bank Feeds feature for versions 2021 R1 and above, specifically where mobile authentication is in use.

As part of this release, we'll be making some changes to some services we offer and retiring others. We'll be retiring the Sage 200 Standard – Opening Balance Migration Tool and the Contact App.



Sage

Thank you!

© 2024 The Sage Group plc or its licensors. All rights reserved. Sage, Sage logos, and Sage product and service names mentioned herein are the trademarks of Sage Global Services Limited or its licensors. All other trademarks are the property of their respective owners.