



Sage Partner



Sage 200 Power BI from CPIo

Enhance your reporting capabilities with real-time Sage 200 visual dashboard reporting

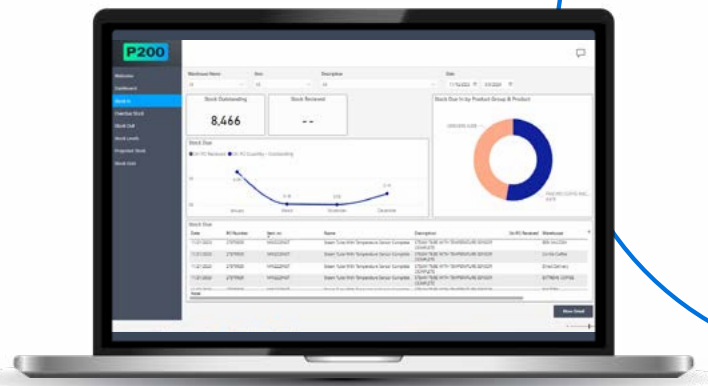
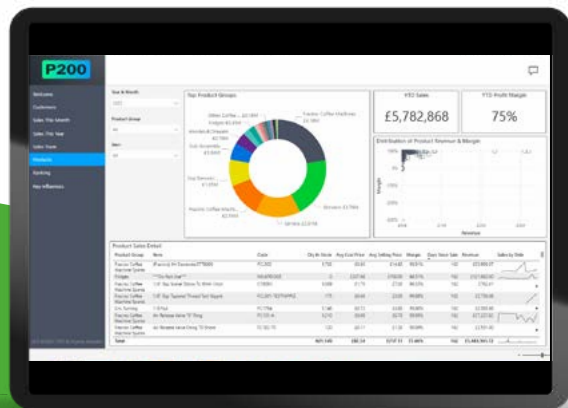
Sage 200 Power BI from CPIo empowers you to make better decisions through real time reporting and insights. Created especially for Sage 200 Professional users, we've created five dashboards to help you analyse and interpret your Sage 200 data in a visual format. Put your whole team in the driving seat and let them interrogate data for better decision making. Focus your attention on trends and expectations, with easy drill down detail to ensure effective analysis.

What do I get included in the pack?

Dashboard 1: Sales Analysis

Identify key trends in your product set to drive improvement

- Measure key sales metrics through real-time reports to gain an in-depth analysis into your business.
- Identify trends, best-selling products and compare your sales targets to actual figures so can you make better informed decisions.
- Monitor and analyse employee sales performance to identify and reward your top achievers.



Dashboard 2: Stock Management

View critical stock metrics for accurate forecasting and planning

- Identify and monitor KPIs to make actionable decisions.
- Highlight inventory trends, identify slow-moving or high-demand items and predict any potential stockouts to better manage demand and maintain exceptional customer service.
- Track supplier performance and create inventory management processes to optimise your inventory levels and improve supply chain management.



Talk to an expert today on 0344 880 6140 or info@cpio.co.uk



Dashboard 3: Purchase Analysis

Ensure business purchases are being controlled and managed with optimal efficiency

- Access timely, accurate and detailed reports on your business spend data to provide you with valuable intelligence on spend patterns.
- Analyse your purchases to develop and create budget plans, forecasts and product strategies to take action to improve profitability.

Dashboard 4: Creditor Analysis

Better understand who you owe money to so you can improve your supply chain flow

- Visual analysis of overdue payments and trends.
- Prioritise payments and improve cash flow forecasting.
- Monitor your credit status to proactively address potential issues and minimise losses.



Dashboard 5: Debtor Analysis

Identify and better understand who owes you money

- Provides real-time insights and total visibility of financial data including outstanding balances, overdue invoices and payment schedules so you can manage your cashflow more effectively.
- Ability to focus on effective budgeting and repayment strategies to make better informed decisions.
- Spot customer trends before they become problems.



How does Sage 200 Power BI from CPiO work?

- Plug in and be up and running in hours not days
- Easy to use and navigate for every team member
- No programming or Power BI skills needed
- Simple, flexible monthly pricing based on numbers of users

Sage 200 Power BI from CPiO is ideal for:

- Leadership teams looking for trends and scenario planning
- Financial Managers seeking to minimise endless reports and Excel spreadsheets
- Finance users wanting dynamic access to data with easy drill down features
- Sales teams developing new products or go-to-market strategies

Through the creation of five powerful dashboards, Sage 200 Power BI uses the standard Power BI features to transform the way you interact with your data. These five dashboards allow you to identify and scrutinise business-critical data from leadership KPIs, cash flow analysis to supplier performance and spend forecasts. Sage 200 Power BI from CPiO can be adapted to meet the data needs of every user in your organisation. This powerful reporting dashboard pack can be adapted and expanded to include other, non-Sage data providing you with a very powerful data visualisation tool.

Our CPiO specialists can work with you to scope out your requirements and create a bespoke suite of dashboards that puts you in the data driving seat.

Ready to
take a look?

Watch our
explainer video 

 Talk to an expert today on
0344 880 6140 or info@cpio.co.uk