



# Cim200 Manufacturing

Advanced Manufacturing Solution for Sage 200 Professional

Cim200  
manufacturing

The screenshot displays the 'Cim200 Stock List' interface for 'Silvery Tweed Cereals - Sage 200'. The left sidebar contains a navigation menu with options like 'Summaries', 'Cim200 Planning', 'Cim200 Works Orders', 'Sales Ledger', 'Sales Order Processing', 'Price Book', 'Purchase Order Processing', 'Bill of Materials', 'Project Accounting', 'Accounting System Manager', 'Manufacturing System Manager', 'Configuration Settings', 'Excel Reporting', and 'Workspaces'. The main area shows the 'Cim200 - Stock Profile' for 'Laptop Bag' (Code: LB1). It includes a 'Stock Item' section and a 'Stock Profile' section with 'Stock Figures' and 'Commercials' tabs. A table shows 'Commercials' data for various periods, and a 'Cost Price History' line graph shows price fluctuations over time.

Description	1 - 01/02/2022	2 - 01/03/2022	3 - 01/04/2022	4 - 01/05/2022	5 - 01/06/2022
Purchased Qua...	0.00000	0.00000	0.00000	0.00000	71
Purchased Value	0.00000	0.00000	0.00000	0.00000	588
Manufactured Q...	0.00000	0.00000	0.00000	0.00000	0
Manufactured V...	0.00000	0.00000	0.00000	0.00000	0
Sold Quantity	0.00000	0.00000	0.00000	0.00000	0

Cost Price History Graph Data (Approximate):

Date	Price
01/06/2022	6.0
01/07/2022	8.5
01/08/2022	7.0
01/09/2022	10.0
01/10/2022	6.5

## Contents

What is Cim200?	3
Module Overview	4
Benefits of Cim200	5
Commercials	6
Stock Control	9
Bill of Materials	13
Works Orders	17
Planning	22
Shop Floor Data Capture with Datalinx	26
Graphical Scheduler	27
Customer Experience & Business Partners	30
Implementation and Migration	31
Support and Training	32
Cim200's Add Ons	33
Pricing and Licensing	34
Who are CIM Software?	35
Contact Information	36

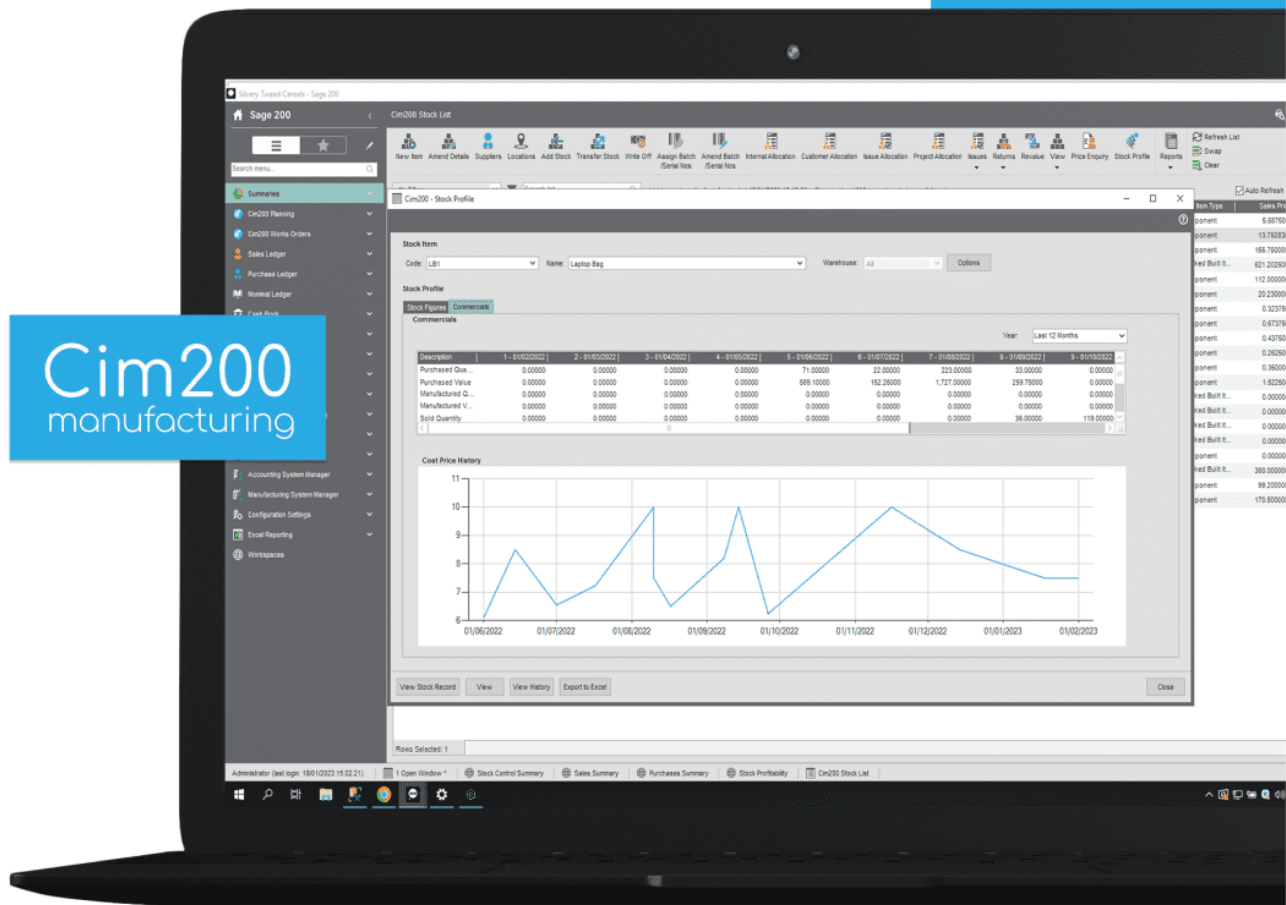
# What is Cim200?

Cim200 is an advanced manufacturing add on for Sage 200.

Control each stage of your manufacturing processes from within the Sage 200 environment.

The fully integrated product looks and feels like Sage 200 but with the extra functionality you would expect from a comprehensive manufacturing solution.

Our design philosophy has focused on improving manufacturing process efficiencies, streamlining data entry and providing powerful enquiry screens. These will allow you to maximise your manufacturing output potential whilst controlling your stock levels and cash flow, enabling you to focus on business growth.



Cim200  
manufacturing

# The Cim200 Modules

The Cim200 suite of modules fully integrates with Sage 200 Professional. With **four standalone new modules and enhancements to existing Sage 200 core modules**, the Cim200 Manufacturing solution provides a complete manufacturing package.



## Commercials

Integrating Commercial Modules with Manufacturing for Enhanced Collaboration



## Stock Control

Efficiently Manage Inventory with Complete Visibility and Streamlined Processes



## Bill of Materials

Ensure Consistency and Quality with Greater Control Of Manufactured Products



## Works Orders

Control Production, Work in Progress and Capacity of Resources Accurately



## Planning

Utilise Just In Time Planning to Boost Cashflow, Minimise Stock Holding & Meet Deadlines



## Shop Floor Data Capture

Use the Power of Barcoding to Improve Accuracy & Efficiency Across all Processes



## Graphical Scheduler

Visualise your Production Schedule and Control your Shopfloor Workload with an Easy-To-Use Interface

# The Benefits of Cim200

Just some of the benefits of the Cim200 Manufacturing software solution...



**Increased efficiency.** Cim200 streamlines data entry, provides powerful MRP recommendations and automates admin tasks.



**Reduced costs.** With improved efficiency throughout the whole system, save on billable hours and reduce your waste production.



**Improved visibility.** Make better business decisions with complete visibility of all of your manufacturing processes in real time.



**Enhanced customer satisfaction.** Ensure products are consistently made on time and meet all quality standards.



**Strengthened collaboration.** With financials and manufacturing modules in one place, improve the synergy between departments.



**Improved accuracy.** All additional manufacturing settings and fields are integrated into Sage 200, avoiding the need for double entry.



**Ease of use.** As Cim200 is integrated within Sage 200, it has the same look and feel making it user friendly.

A vertical image on the left side of the page shows a hand holding a silver pen over a document. The document features several charts, including a bar chart and a line graph. The background is a light blue gradient.

# Commercials Enhancements

## Integrating Commercial Modules with Manufacturing for Enhanced Collaboration

Adding extra functionality and new modules within Sage 200 is only useful if they can be utilised throughout the software.

Sage 200 Commercials has been enhanced to take advantage of these, such as being able to **view the stock profile screen when creating or amending sales or purchase order item lines** or **using the supplier part number when raising a new purchase order item line**. Any linked works orders can be viewed, simply from within the sales or purchase order item line.

Other features have been included to further improve the ordering routine including

- quick text
- courier details
- better scheduling of sales orders
- an option to allocate to works orders on purchase order receipt.

### Key Functionality in our Commercials Enhancements

#### **Benefit from Visibility of Stock in all Areas of the Business**

Gain insights into stock records with view of replenishments and current stock position from within the commercial areas of Sage 200 Professional.

#### **Ensure Optimum Profitability Across all Quoted Items**

Create accurately costed quotations incorporating unique Bill of Materials. Provide your customers with flexible quotes utilising multiple price breaks.

#### **Maintain Efficiency with Automation of Tasks**

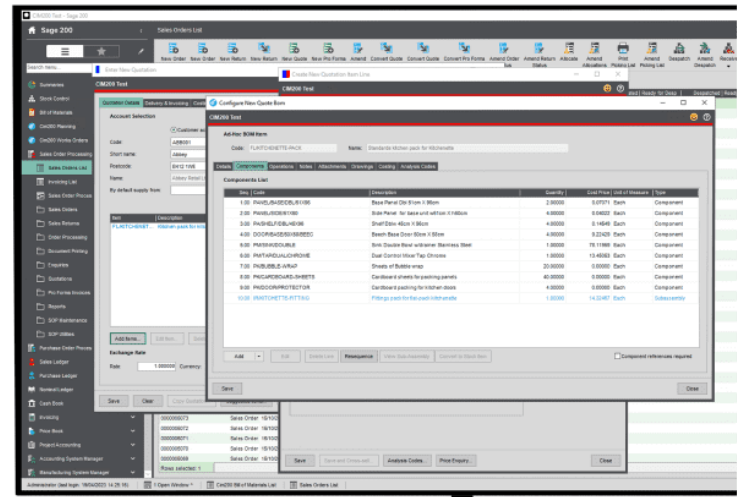
Generate works orders directly from a sales order to streamline procedures between the sales and manufacturing areas of the business.

## Quotations

Accurately create fully costed quotations for manufactured items with the option of incorporating one-off Bill of Materials for each quoted item to accommodate customer requirements.

Provide customers with flexible quotes utilising multiple price breaks against items quoted.

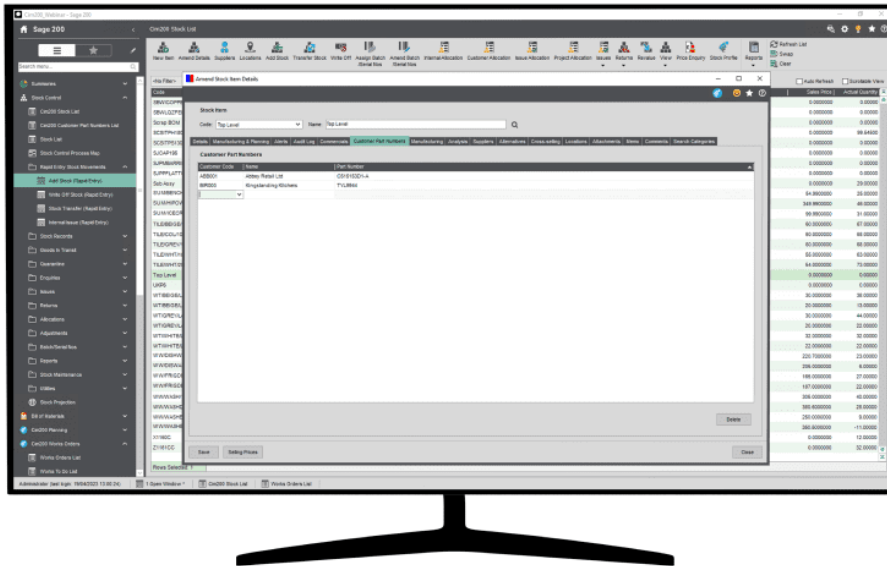
Convert quotations to sales orders and raise one-off works orders to automate processes between sales and manufacturing.



## Customer Part Numbers

Streamline sales order entry, by utilising customer part numbers setup against Sage 200 stock items. Allowing one stock item to fulfil the requirements of multiple customers, cutting down the number of stock items in the system.

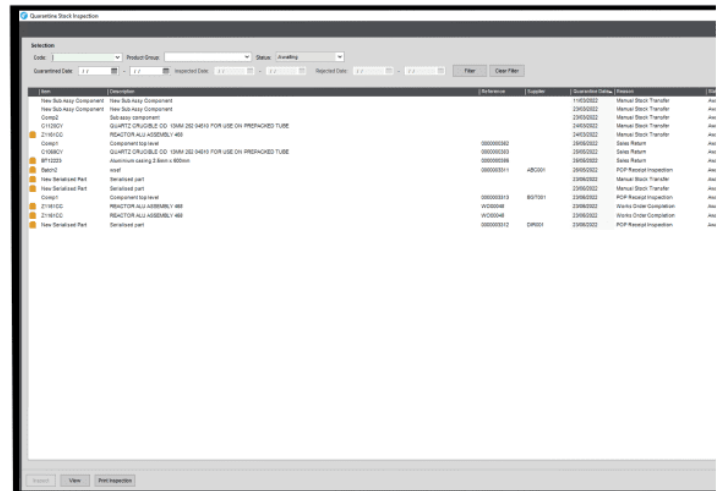
Customise your customer facing documents to include the customer part numbers and your own stock code, giving you the flexibility to meet your customer demands, without sacrificing process efficiency.

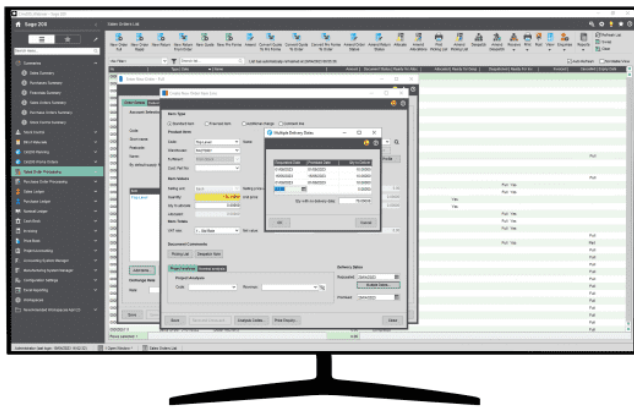


## Quality

During goods receipt processing, from a purchase order, works order, or BOM build, harness the Cim200 Quality Control functionality to validate stock through quarantine inspection before it can be used.

Assign a specific inspection template to items as they are processed into quarantine, carry out the inspection process, releasing items to available stock that pass inspection or rejecting items and if necessary, producing a purchase return.





## Scheduled Sales Order Lines

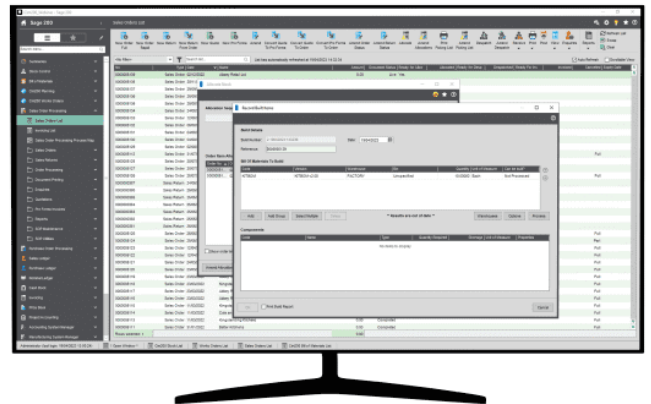
Extending standard Sage 200 functionality, utilise Cim200 Scheduled Order Lines.

Simply generate a schedule of order lines for one stock item, based on the quantity ordered and the reoccurring time requirements, such as daily, weekly, or monthly drops.

## Kit Boms

Efficiently assemble a kit of parts ready for despatch.

Streamline your order processing and data entry overhead, complete a Bill of Material build, downdate the component items from stock and book the kit item into stock as part of the Sage 200 sales order allocation process.



## Additional Commercial Features

### Quick Text Lines

For speed and accuracy when entering repeatedly used large amounts of text, employ a library of pre-defined free text lines when entering orders.

### Linked Orders

Providing visibility to the Manufacturing side of the business from sales orders processing, link, amend and view works orders linked to the sales order item.

### Needed By

Quickly identify where received goods are needed, allowing you to streamline your business processes and ensure your stock gets to where it is needed as efficiently as possible.

### Goods Receipt Allocation

When works orders are tagged to a specific purchase order, you can automatically allocate materials to these works orders during goods receipt, saving time and improving accuracy.

### Supplier Part Numbers

Maximise the potential of the Sage 200 stock item supplier information by drawing upon the supplier part numbers held against the stock record. Giving you the flexibility to raise purchase orders for supplier part numbers.

### Stock Profile

Quickly access key data via the stock profile button when placing, amending, or viewing a sales order stock item line. This can be useful to identify the availability of the stock item on order, along with incoming replenishments and manufacturing progress.





# Stock Control Enhancements

## Efficiently Manage Stock With Complete Visibility and Streamlined Processes

To enable Cim200 Manufacturing to integrate seamlessly with Sage 200 Stock Control, all development has been implemented using the same well known user interface.

Many new features have been added to enhance the way you manage your stock, including

- a detailed stock profile showing the current and projected stock levels
- a rapid entry stock movements screen allowing users to make quick and easy stock movements
- an audit log showing any amendments made to the stock item, by whom, and when.

With Cim200 Stock Control Enhancements, streamline your business' stock processes and gain greater visibility, all fully integrated with the Sage 200 Professional Stock Control.

### Key Functionality in our Stock Control Enhancements

#### **Improve Quality and Customer Satisfaction**

Incorporate Cim200's quality control functionality into your purchase & production processes to ensure the quality of your goods meet customers' expectations.

#### **Ensure all Stock Movements are Carried Out Productively**

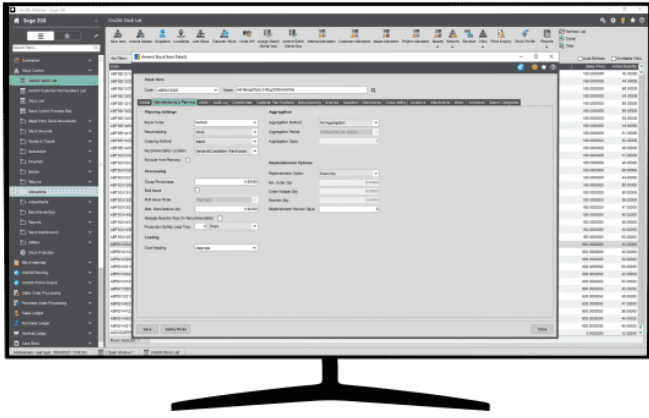
Streamline business processes with enhanced stock control features that remove unnecessary and repetitive steps.

#### **Track Stock Items that are Sold, Purchased or Manufactured**

Employ a complete situational overview of stock records with sight of orders and history across the whole business for valuable insights.

## Manufacturing

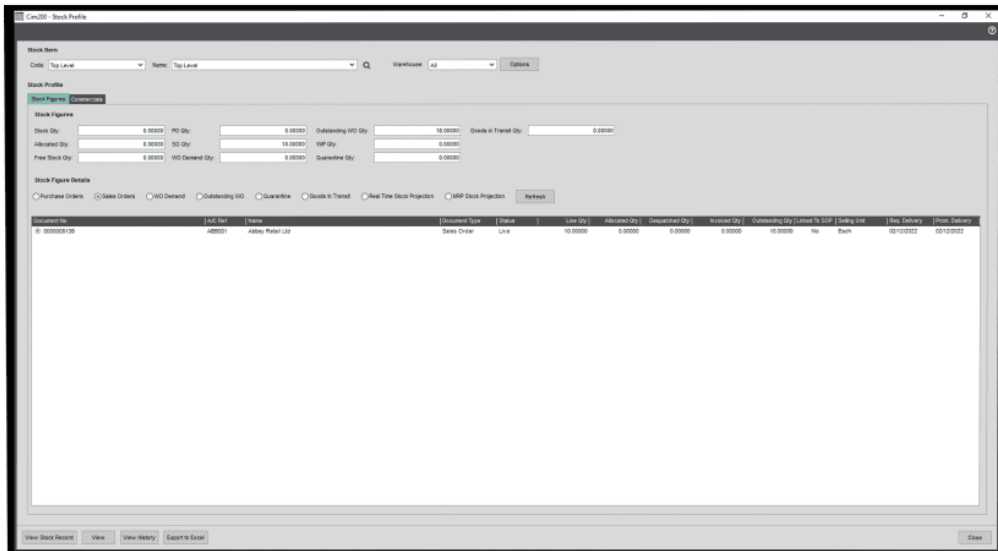
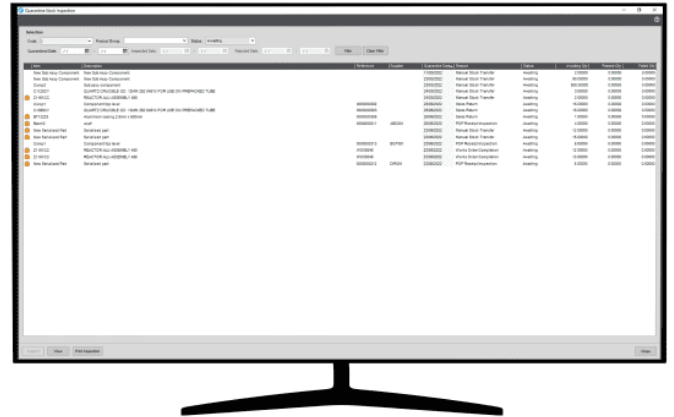
Cim200 is a manufacturing add-on for Sage 200. We have incorporated all of the additional settings and fields relevant to manufacturing goods with Cim200 into the standard Sage 200 Stock screens, avoiding the need for double entry or having to enter data in multiple places



## Quality

Utilise the Cim200 Quality Control functionality during purchase or works orders receipts, and BOM builds, to ensure that stock cannot be used until it has passed through quarantine inspection.

Assign specific inspection templates to the item in quarantine and carry out the inspection process, releasing items that pass the inspection to available stock, or rejecting the items and producing purchase returns if necessary.



## Stock Profile

The stock profile screen provides you with a complete situational overview of your stock position, incorporating demands, replenishments, and stock status for a specified item.

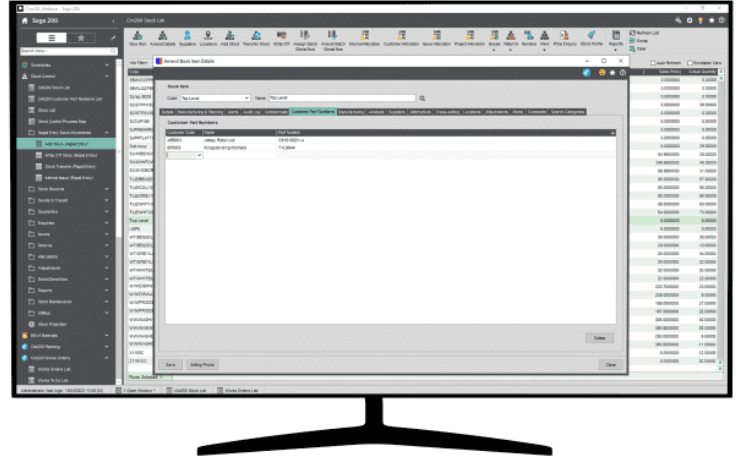
You have the ability to drilldown into current sales, purchase and works orders, enabling you to interrogate all demands and replenishments from one screen.

Furthermore, the stock projection provides you with a forecasted projection of your stock position into the future, enabling you to make key decisions decisively.

## Customer Part Numbers

Cim200 provides you flexibility throughout the system to enable you to better serve your customers.

One such example is the customer part number functionality. Configure your own parts with customer references, and when you receive an order from a customer, enter their references directly into the sales order, cutting down on data processing time and inevitable human error, whilst providing your customer with the flexibility they want and need from their trusted suppliers.



## Rapid Stock Movements

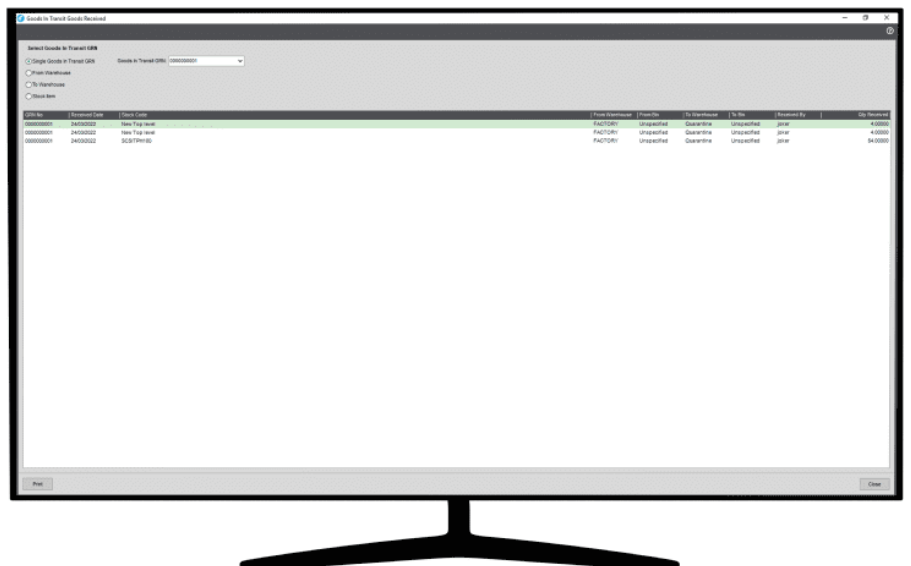
Speed up your stock transaction processing by utilising Cim200's Rapid Stock Movement functionality.

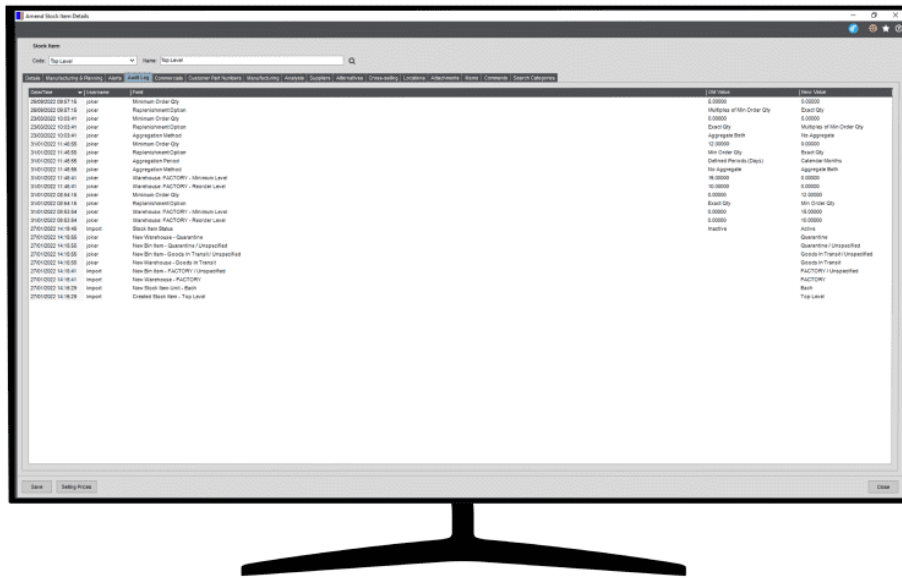
Enter multiple stock adjustments for numerous stock items in one simple screen, whether it is an adjustment, write off, issue, or transfer.

## Goods in Transit

Not all goods are available for next day shipping, similarly you may have stock located in multiple warehouses situated around the country.

Utilise Cim200's Goods in Transit functionality to have the system consider transit times when carrying out resource planning and transferring of stock between locations. Ensuring you always have the stock you need, where you need it, when you need it.





## Audit Log

The Cim200 Audit Log records any change made to the static data associated with a stock record, whether it be a standard Sage 200 field or something specifically associated with Cim200, every change is captured by whom and date/time.

## Additional Stock Control Features

### Stock Position Visibility

Easily see the stock position with a running total on the stock history screen, enabling you to quickly identify your stock position, either current or retrospective, without having to switch between different enquiry screens.

### Commercials Visibility

Further additions the Sage 200 Stock functionality includes a commercial overview of a product, giving instant access to key information regarding sales, purchase and manufacturing output over the previous 12 months.

### Supplier Price Breaks

Maximise your buying power. Cim200 brings supplier price break functionality to Sage 200. Interrogate price breaks when raising a purchase order to ensure you buy materials as cost efficiently as possible

### Mandatory Fields

Ensure your data is maintained accurately by defining any field on the stock record as mandatory. Users will be warned when creating or updating records if any mandatory data has not been populated.

### Traceability Enquiry

Utilise the powerful Cim200 traceability enquiry screen to interrogate traceable items. This multi-directional enquiry enables you to quickly see where a batch or serial number has been throughout its lifecycle, all at the touch of a button. Giving you confidence in your traceability and saving time and effort trying to track information down.

### By-Products

Utilise by-products functionality to quickly and easily process receipts for additional ancillary items created during the manufacturing process or received from suppliers automatically during the relevant receipt process.



# Bill of Materials Enhancements

## Ensuring Consistency and Quality with Greater Control of Manufactured Products

Additional Cim200 features have been added to the Sage 200 Bill of Materials module to enhance your manufacturing build processes.

New functionality has been added to improve production efficiencies in multiple manufacturing environments:

- A production line environment can take advantage of multiple routes, enabling you to react to changing demands on your production lines and maximise output.
- Food, chemicals, and ingredient-based manufacturers can utilise Cim200 Percentage Bom functionality to ensure production accuracy.
- Kit Bom functionality enables assembly environments to streamline kitting and despatch processes.

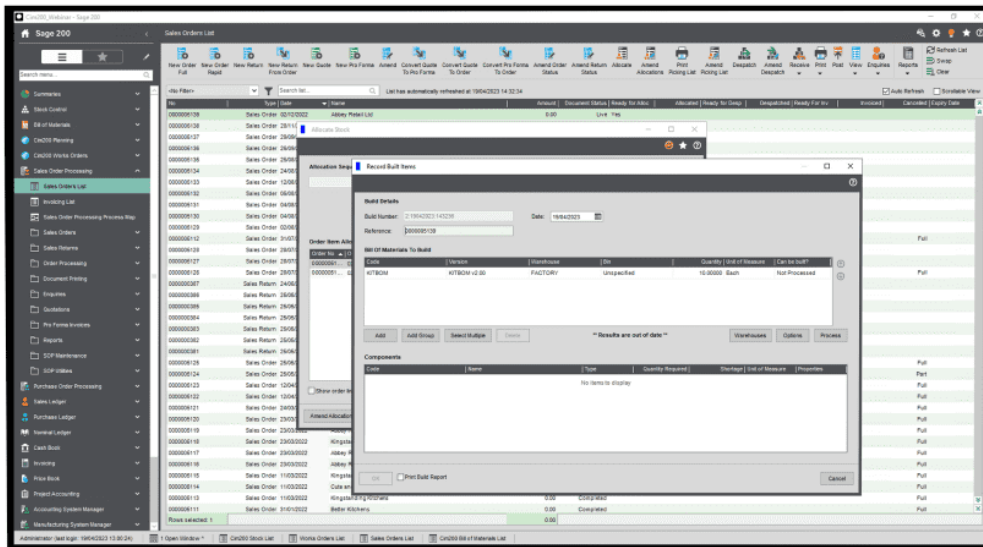
As with all Cim200 modules, any additions or amendments have been created using the Sage 200 user interface, resulting in a seamless integration.

### Key Functionality in our Bill of Materials Enhancements

**Ensure Efficiency is Built into Manufacturing Processes**  
Implement multiple routes and percentage bill of materials features to provide agility across production and warehousing.

**Track Changes to Bill of Materials**  
Providing complete visibility, monitor and review all amendments carried out by users at field level within an audit log.

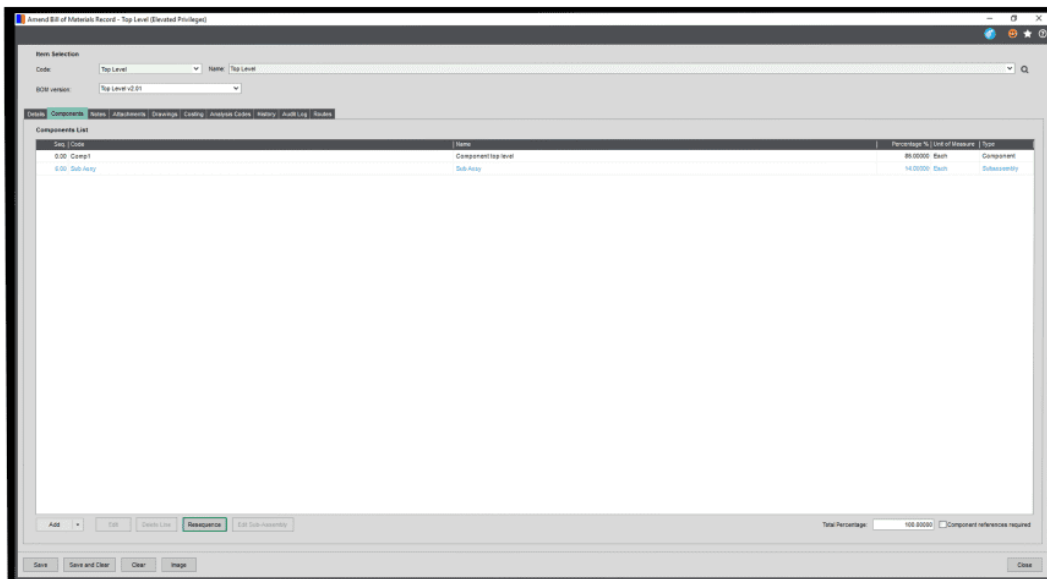
**Maintain Accurate Stock Control**  
Employ advanced reverse build and kit bill of materials features to ensure accuracy of stock control is maintained at all times.



## Kit Boms

Kit Bom functionality enables you to efficiently assemble a kit of parts ready for despatch to a customer.

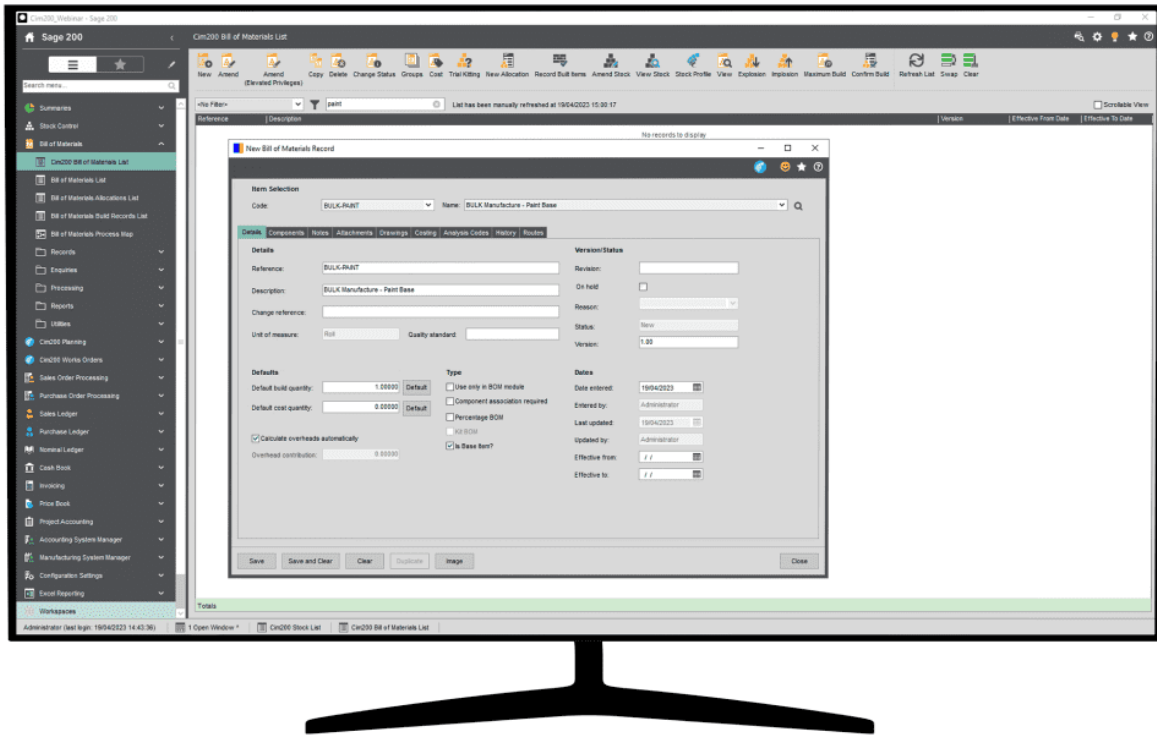
Complete a Bom build, adjusting out all of the component items from stock and booking the kit item into stock during sales order allocation, streamlining your order processing and data entry overhead.



## Percentage Boms

Specifically designed for food and liquid/chemical manufacturers, have your manufacturing system work the way you do.

Cim200's percentage BOM functionality will allow you to configure your Bill of Material components as a percentage on the finished product.

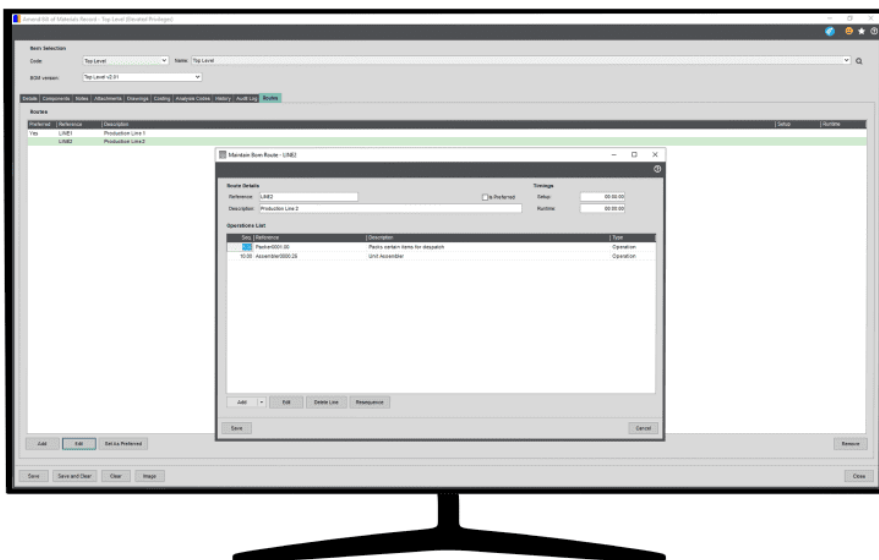


## Base Items

Cim200's base item functionality allows you to output multiple built items from the same Works Order.

Designed for scenario's where a bulk product is manufactured and then dispensed into smaller containers for sale, the base item functionality cuts down on data-entry overhead and paperwork.

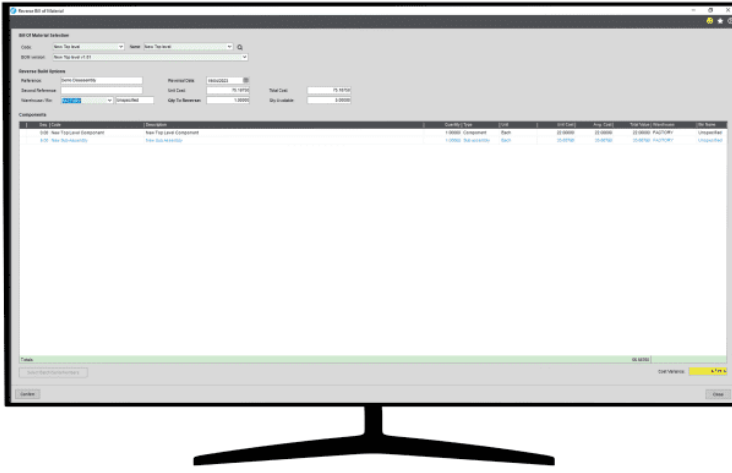
Taking a scenario where you manufactured 1000 litres of paint, and wanted to dispense those 1000 litres into tester pots, 500ml, 1litre and 5litre pots, you would need 5 works orders and 5 sets of paperwork in traditional manufacturing systems. With Cim200, the same can be achieved in a single works order record, with a single set of paperwork.



## Multiple Routes

Giving you the flexibility demanded by agile manufacturing environments.

Multiple routes functionality enables you to define the different manufacturing processes on the Bill of Material, and then enables you to select the most appropriate route at the point of generating your Cim200 Works Orders, which could be based on available resource capacity, sub-contractor availability, cost or lead times.



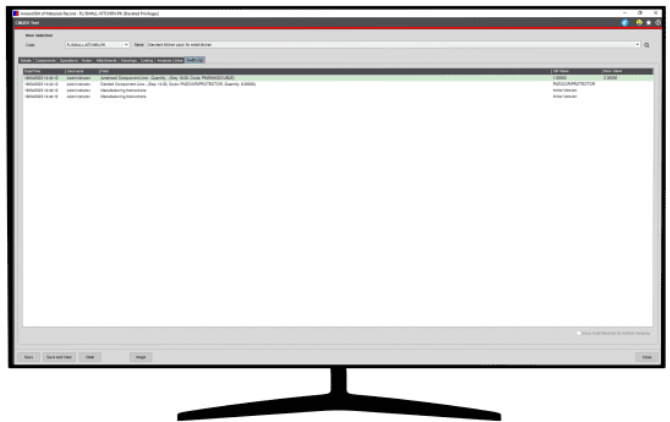
## Ad-hoc Reverse Build

Ideal for environments where items or kits are regularly disassembled.

Cim200's ad-hoc reverse BOM build functionality allows you to take a finished item out of stock and put all the components back into stock, at any time and at the click of a button, saving valuable data-entry time.

## Audit Log

Cim200's Audit Log functionality extends to Bill of Materials. Capturing and logging any changes, additions or removals on the bill of material and providing you with a comprehensive history of the Sage 200 Bill of Materials, independent of whether version control is enabled or not.



## Additional Bill of Materials Features

### Stock Profile

Access the Stock Profile directly from Bill of Materials. The stock profile screen provides you with a complete situational overview of your stock position, incorporating demands, replenishments, and stock status for a specified item.

### Trial Kit Raise Words Orders

Enhancing the standard Sage 200 Trial Kitting functionality, generate Cim200 Works Orders directly from the Trial Kit screen.

### Component Analysis Codes

Cim200 provides you with 20 Analysis codes that can be defined against individual components on your Bill of Materials, providing you with the flexibility needed to capture any information specific to your individual requirements.

### Operation Analysis Codes

Along with 20 analysis codes on components, the same flexibility is available against operations. Define up to 20 analysis codes against operations and record specific information as you require.

### Rich Text Instructions

Highlight key information in your manufacturing instructions. Cim200's rich text functionality enables you to ensure important information is quickly identifiable for your manufacturing staff, cutting down on mistakes and issues.





# Works Orders

## Control Production, Work in Progress and Capacity of Resources Accurately

Setting up your stock items and bill of materials is just half the battle when trying to maintain the items you are manufacturing and selling.

The Cim200 Works Order module gives you the functionality to control and monitor all items that are currently being manufactured, either as sub-assemblies for other bill of materials, or as finished items to be despatched on sales orders to fulfil your customer demand.

A suite of powerful enquiry screens and documents provides your production staff with complete visibility to track each process effortlessly.

Production managers can utilise Cim200 capacity planning functionality to ensure there is sufficient capacity to satisfy your demand.

The Cim200 Works Order module is fully integrated with Sage 200 Professional, allowing the control of built items through each stage of the manufacturing process.

### Key Functionality in our Works Orders Module

#### **Track Production Throughout Each Stage of Manufacturing**

Evaluate rough cut resource availability and produce shop floor documentation with comprehensive instructions and timings.

#### **Analyse Actual vs Estimated Costs of Production**

Ensure reliable works order costings that remain within budget by monitoring material, machine, tooling, subcontract and overhead costs.

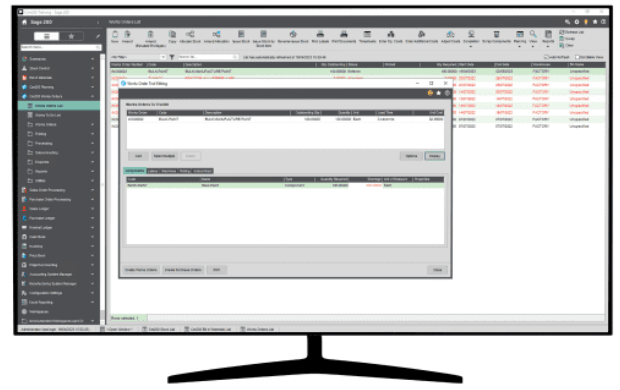
#### **Maintain Material Allocations and Work in Progress**

Allocate and issue components to production orders and control sub-assemblies, to enable accurate stock holdings and comprehensive WIP analysis.

## Trial Kitting

Utilise trial kitting to ensure your component stock levels are sufficient to fulfil specific works order demand.

View a list of shortages for multiple works orders and raise replenishment orders from within one easy to use screen.

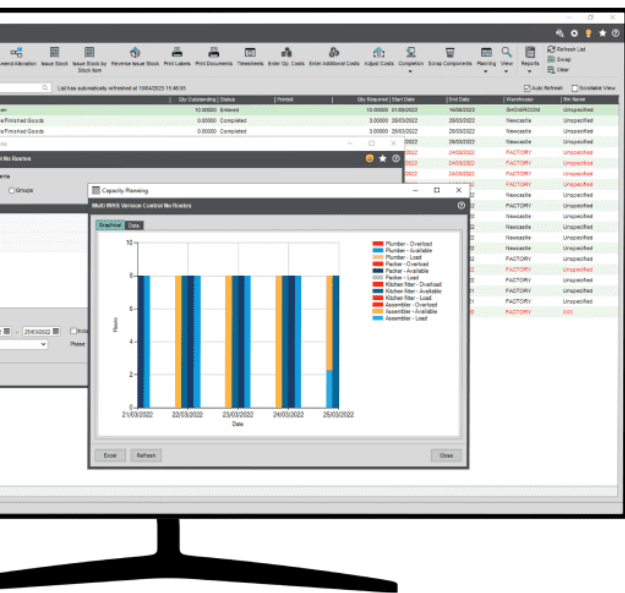


## Capacity Planning

The Cim200 rough-cut capacity planning functionality provides a complete overview on the load and capacity across all resources for any given period of time.

Specify which resource group you would like to interrogate, along with the start date and whether you want to view daily, weekly, or monthly demand.

Move resource capacity on the fly to see what impact it has on your production loading, allowing you to plan overtime or reschedule jobs accordingly.



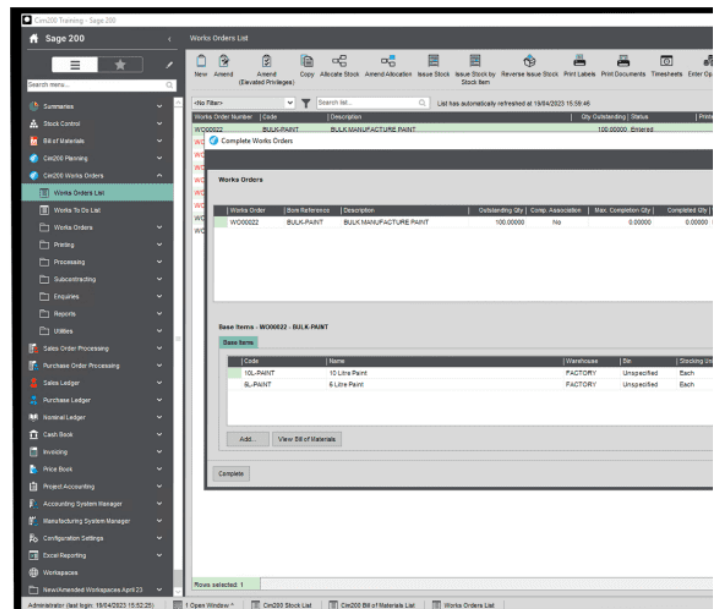
## One to Many Works Order

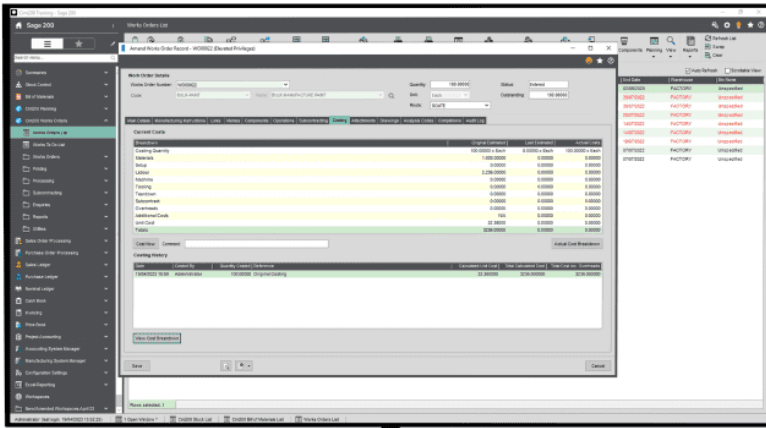
Employing the Cim200's base item functionality, when completing works orders, users will be given a list of possible outputs with a conversion to the works order quantity.

Designed for businesses that deal with bulk products that are manufactured and then stocked in smaller containers, the base item functionality reduces paperwork and data entry.

Taking a scenario where you manufactured 1000 litres of paint, and there is a requirement to dispense the 1000 litres into tester pots, 500ml, 1litre and 5litre pots, generally 5 works orders and 5 sets of paperwork would be needed in traditional manufacturing systems.

To reduce overheads, with Cim200 Manufacturing the same can be achieved using a single works order record, with one set of paperwork.





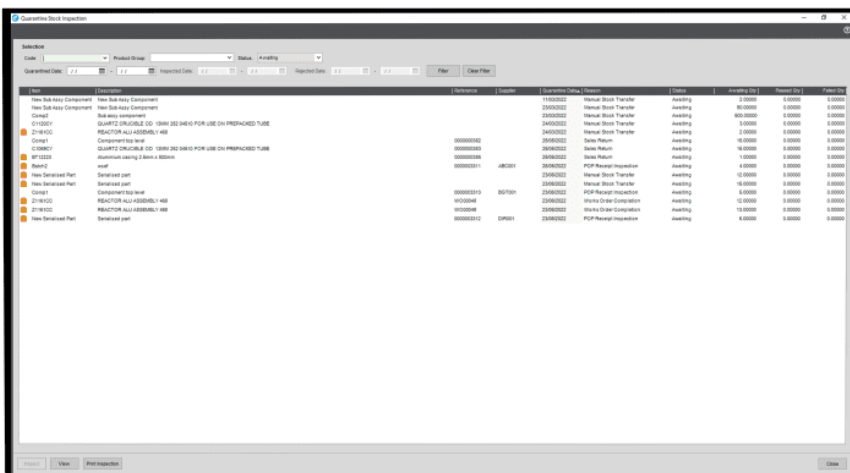
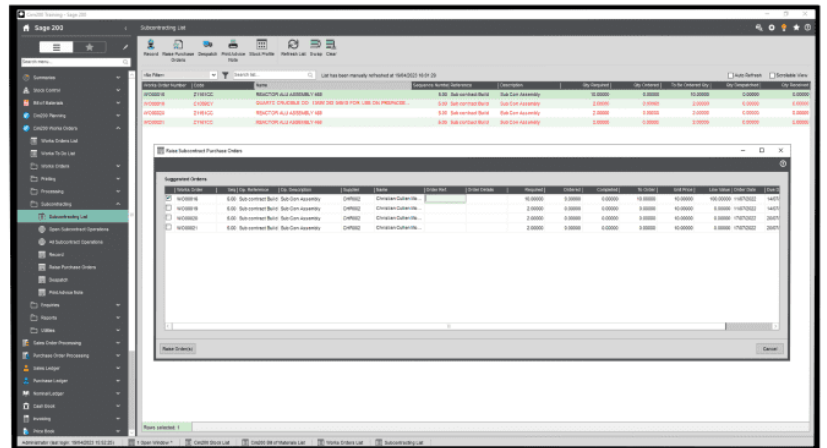
## Costing

For analysis and profitability of jobs, compare estimated costs when the work order was raised, along with the latest estimate, and the actual once the job is completed, fully broken down by material, labour, machine, setup, teardown, tooling, subcontract, additional expenses, and overheads.

## Subcontract

To ensure complete control of external processes, deploy the subcontract feature to raise the required subcontract purchase orders, along with despatching the components and receiving them back in to work in progress once the subcontract process has been carried out.

Subcontracting shows you any items that are currently 'out' at the supplier and the dates required, along with the quantities.



## Quality

In certain industries it is inevitable that components, or even the finished goods themselves, will be scrapped due to a fault during manufacture.

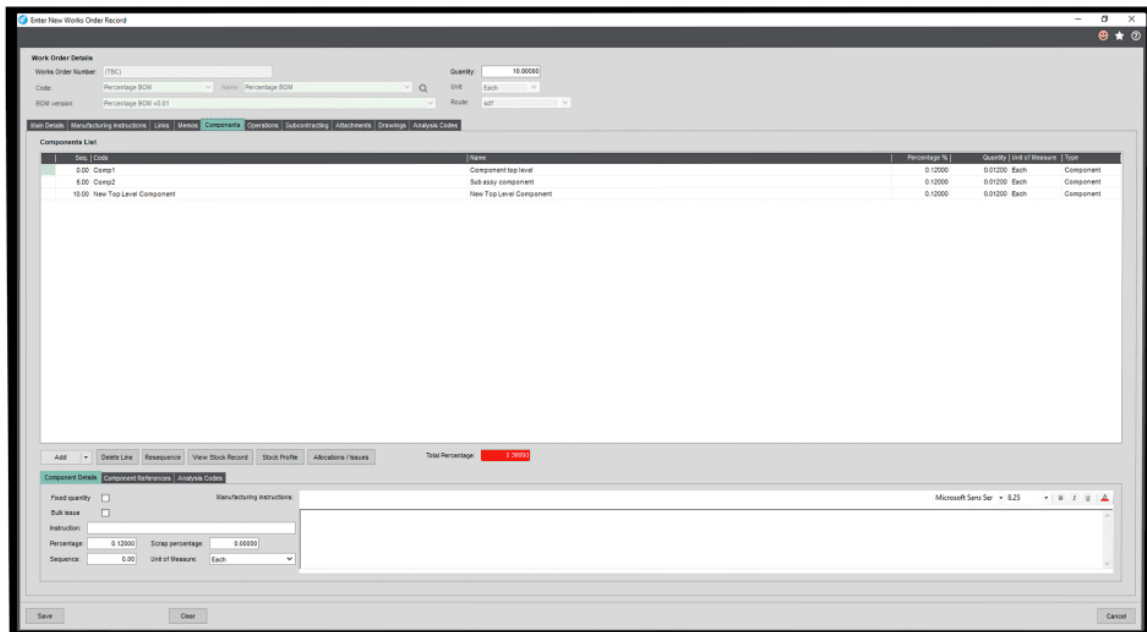
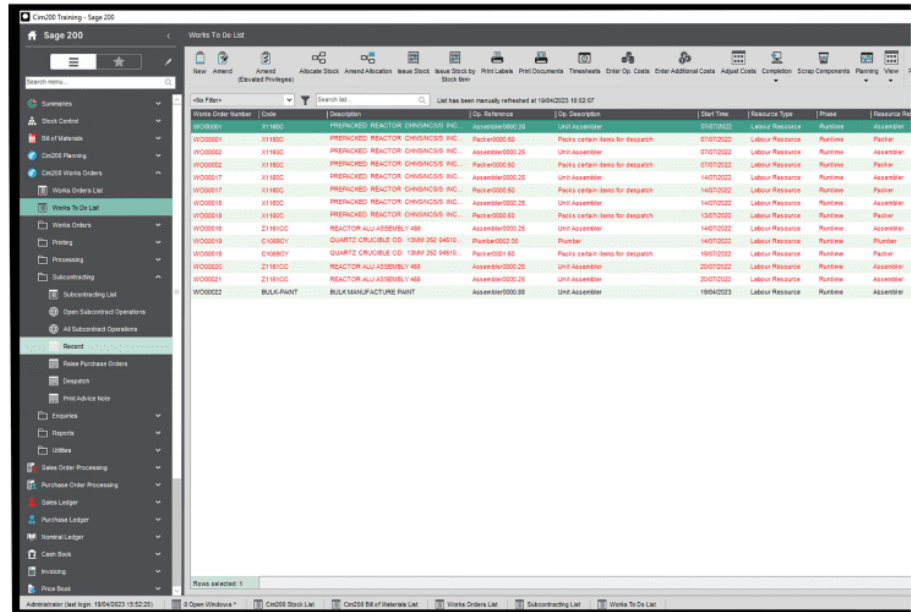
Cim200 allows you to scrap these items, recording the reason why, by whom, and when.

## Work To List

For greater visibility across production, employ an additional list view showing every outstanding works order operation, detailing the operation start date, setup time and run time.

The Work To List is live and does away with the need to run traditional work to reports that become out of date very quickly.

Filter the Work To List by labour or machine resource for individual work centre views.



## Percentage Works Orders

Specifically designed for liquid/chemical and food manufacturers, have the manufacturing solution work the way you do.

Building on Cim200's percentage Bill of Materials functionality, allowing the configuration of Bill of Material components as a percentage on the finished product, these percentages are converted to the relative quantity for ease of allocation and issue to works orders.

## Additional Bill of Materials Features

### Reverse Completion

Providing flexibility around the completions of works orders, the Reverse Completion functionality allows for a works order completion to be reversed, removing the completed quantity from stock and placing component items back into WIP.

### Linking

To ensure products are being manufactured to customers' requirements, works orders can be firm linked to Sales Orders preventing MRP relinking the order. The Sales Order can be viewed directly from the Works Order Links tab whether it is a firm linked order or an MRP linked order.

### Memos

Collaborate across the production process with date/time and user stamped memos against works order records.

### Operation Times

For some companies, default times set on operations are sufficient to cost the job, however, many need more accurate costs. Using the Cim200 operation times and costs functionality, book times for a specific employee with their own rate, using a designated machine that also has its own cost, for a specified works order. This ensures that every second booked against a job is costed accurately.

### Audit Log

The audit log will track changes made to static fields, components and operations added or removed, how the order was created or cancelled by date/time and user.

### Nominal Integration

Taking advantage of Sage 200 advanced accounting functionality, Cim200 extends the Stock Control to Nominal Ledger integration to works orders, posting component issues to WIP along with operational processing costs.

### Traceability

If traceability is required, it is crucial that the correct batch or serial number is allocated and issued to the job. With traceability in Cim200, easily track where an item has been used, and what batch or serial numbers were produced from a works order.

### Shop Floor Documentation

To produce paperwork for Works Orders, as standard, Cim200 Works Orders comes with a pre-configured Picking List, Route Card, Job Sheet and Operation Card, as well as both "In-Progress" and "Completion" labels.

To meet the specific requirements of a business the documents produced from Cim200 are fully configurable and can be tailored to suit your needs.

### Jobbing

Jobbing production method can be employed to allow the of manufacture of products to meet specific requirements of customers.

With Cim200, it is possible to specify the stock item that should be processed using a jobbing method, giving businesses the flexibility to produce certain items to order, rather than using a batch manufacturing process.

# Planning

## Utilizing Just In Time Planning to Boost Cashflow, Minimise Stock Holding and Meet Deadlines

Meeting your customer demand in the timeliest and most cost-effective way is one of the key elements required from your manufacturing software.

The Cim200 Planning module is one of the most important in helping achieving this goal. It reads demands from across all modules, whether it be customer demand via a sales order, shopfloor demand from a works order, maintaining stock levels through make to stock, or even demand from a sales forecast in the future.

It encapsulates all requirements into one easily controlled screen, detailing all the finished goods and components that are needed to fulfil the demand, giving the user full flexibility to choose the most appropriate supplier or amend the build purchase quantities to suit.

The Cim200 Planning module will help you to ensure all replenishments required to satisfy your customer requirements are met.

### Key Functionality in our Planning Module

**Ensure Demands are Fulfilled from Across Sage 200 & Cim200**  
Reading from sales orders, sales forecasts, make to stock, works orders and reorder levels, Cim200 Planning establishes if demands can be met.

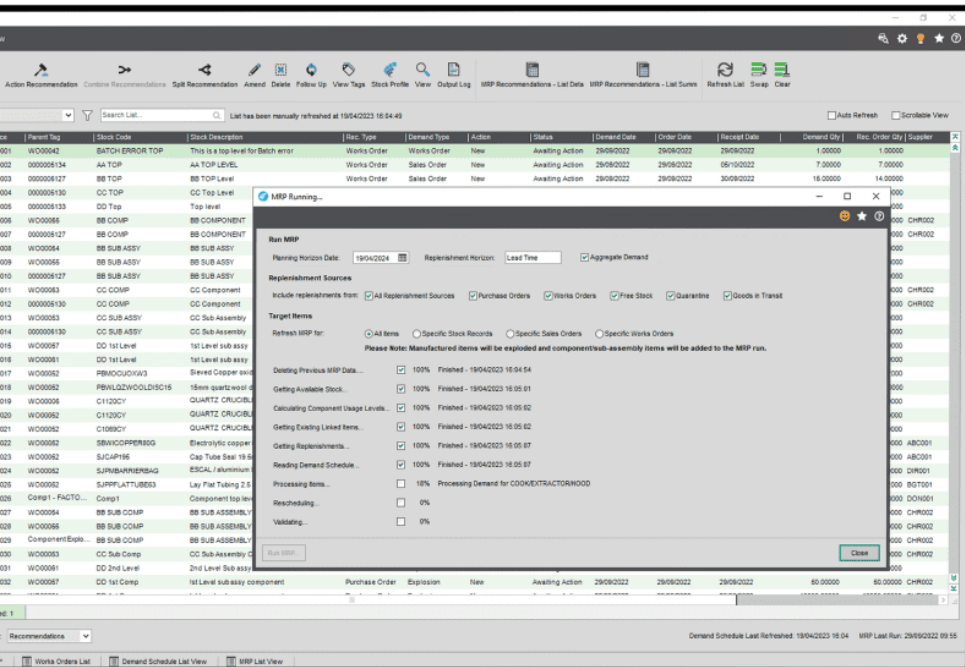
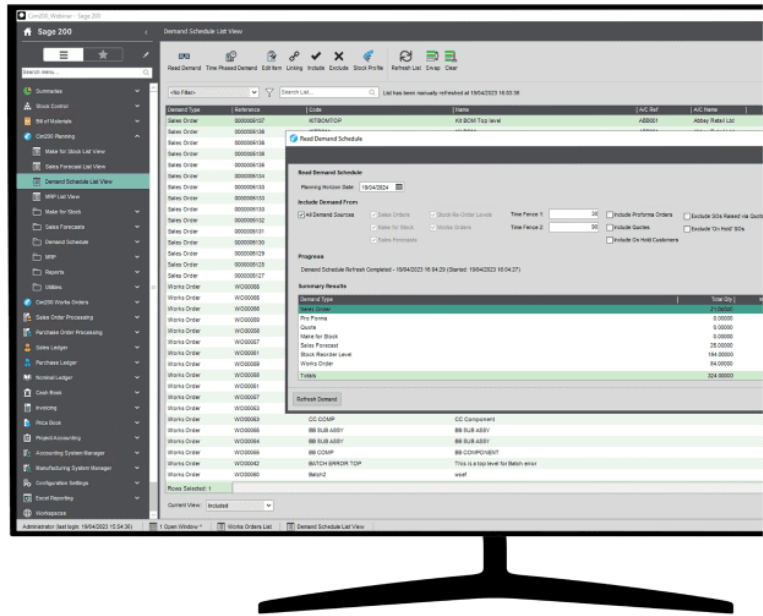
**Tracking of Shortages and Replenishments**  
Determine purchase and manufacturing recommendations based on demand versus current stock availability and outstanding replenishments.

**Optimise Cashflow with Rule Based Recommendations**  
Set pre-requisites against stock items, such as reorder rules and lead-times, to only buy and make what you need and when it's required.

## Demand Schedule

Ensuring all demands are taken into account during the Cim200 planning process, the demand schedule provides a list of the demands within the parameters set at the time the schedule was run. It is an 'explanation' of what will be considered by MRP, detailing the order references, quantities and dates required.

There is also an 'exclusion' list that shows the demand that will not be considered during the next MRP run with a reason for full visibility.



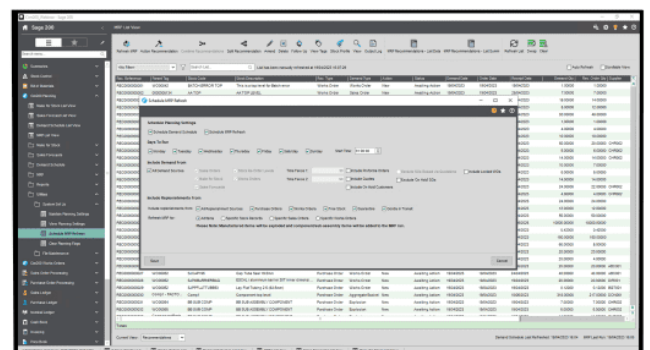
## MRP

MRP reads through all the demand generated from the demand schedule and generates a list of recommendations to purchase and manufacture goods to satisfy that demand by the due dates required.

Once MRP is run, you are provided with a list of all the recommended orders, with the tools to interrogate them and action as purchase orders and works orders accordingly.

## Automation

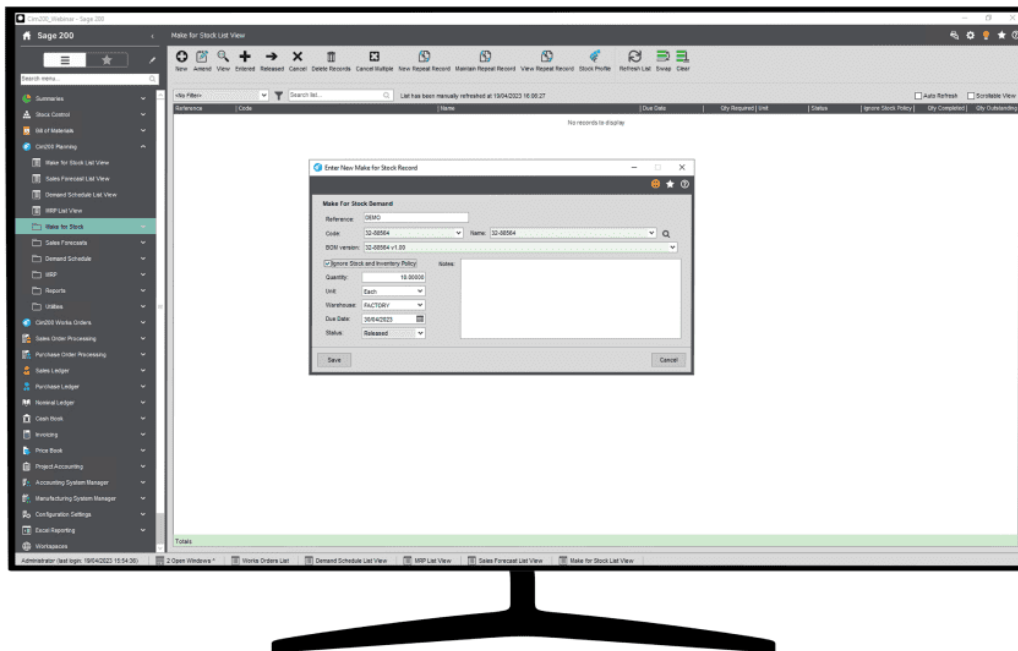
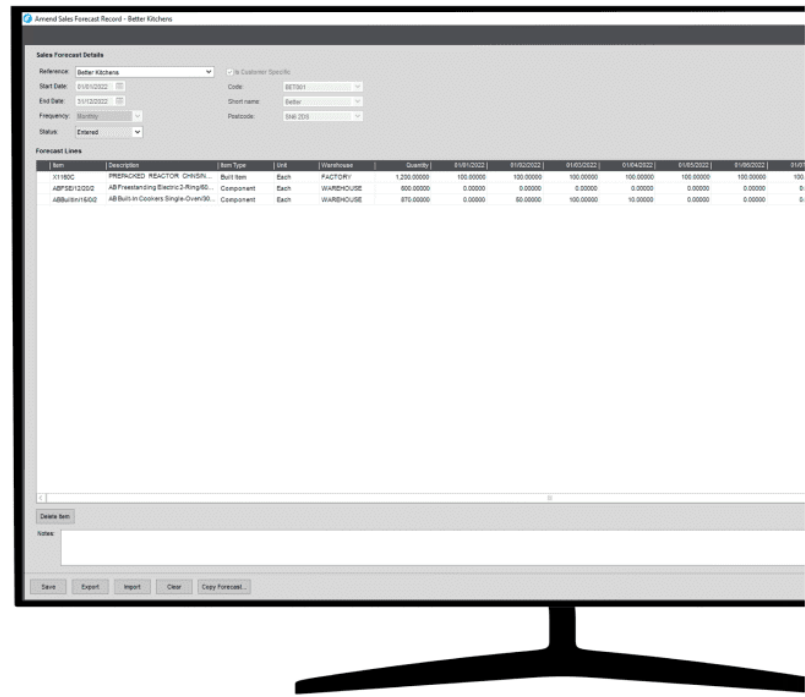
To save time during office hours, Cim200's Demand Schedule Refresh and MRP can be scheduled to run out of hours as and when needed.



## Sales Forecasts

Where customers regularly order products over a set period, but the lead time of the goods supplied is greater than the date span from order to the requirement date, utilise the Cim200 sales forecast functionality.

Sales Forecasts allow demands for customers to be considered prior to them placing the order. Cim200 Planning will use the specified settings to determine whether it creates the demand from the sales forecast or the sales order.



## Make to Stock

Although nothing is guaranteed, sometimes you know that you will need a certain amount of stock at a specific time of the year, whether this is due to seasonal demands, or customer promises.

Make for stock allows you to enter your own demand on the system at the dates you request, regardless of any other demands placed within Cim200.

This helps make sure that you have the stock available to supply those customers when you could be at your busiest.



## Rescheduling

Once the MRP process has completed its calculations, it will interrogate all existing replenishments on the system to determine if the date they are due to be received is still relevant, or if they are still needed at all.

If the replenishment is still required but the due date on the demand it is needed for has changed, to allow them to be received just-in-time for the updated demand due date, MRP will recommend rescheduling the purchase or works orders, avoiding stock being sat on a shelf for any longer than is needed and improving cashflow.



## Additional Planning Features

### Aggregating Demand

Configure each stock item with individual aggregation settings, with options to aggregate by a specific number of days, by calendar week or calendar month. To streamline MRP recommendations and ordering/production processes, all demand that falls within the aggregate demand buckets will be combined automatically.

### Firm Planning

To ensure that the Planning system does not recommend altering production plans within a specified timeframe, employ Firm Planning Periods.

### Tags and Links

Via the simple yet powerful tagging system, easily track and identify what replenishments will be used to satisfy which demands. Quickly and easily convert a planning Tag to a firm link to ensure the planning system does not re-tag a replenishment that you wish to use for a specific demand.

### Stock Profile

Access the Stock Profile directly from MRP. The stock profile screen provides users with a complete overview of the stock position of a specified stock item, incorporating demands, replenishments, and stock status.

### Safety Lead Times

To ensure you can meet your customer expectations regardless of any potential delays, define individual purchase or production safety lead times.

### Jobbing

To allow the of production of products to meet customers specific requirements, jobbing production method is employed. With Cim200, it is possible to specify which stock records should be processed in this way, giving you flexibility to produce certain items to order, rather than a batch manufacturing process.



# Shop Floor Data Capture



## Using the Power of Barcoding to Improve Accuracy & Efficiency Across all Processes.

We have worked with Datalinx Computer Systems to deliver a versatile Shop Floor Data Capture system that functions within our Cim200 Manufacturing product.

This module utilises the speed, accuracy, and power of barcodes to provide you with the ability to process a range of stock and operational transactions through a seamless integration with Cim200 and core Sage modules.

### **Maintain Efficient Production Processes and Stock Control**

With the power of barcoding, allocate and issue stock to works orders, manage subcontract processes and complete items into stock.

### **Track Labour and Machine Times Against Works Orders**

Capture times for works orders operations and monitor employee productivity in real time to maintain manufacturing profitability.



# Graphical Scheduler

## Take Control of your Production Planning. *Intuitive, cost-effective, integrated.*

Visualise your production schedule and control your shopfloor workload with our intuitive and easy to use interface. Simply drag and drop...

Our Graphical Scheduler is a visual representation of a scheduling system that displays processes on a timeline to aid in planning and managing of production activities.

The Scheduler draws its data directly from Cim200 Manufacturing, allowing the production plan to be reviewed and manipulated, providing 'What if' functionality before committing back to Cim200.

The Graphical Scheduler, integrated within Cim200, is:

- Device Agnostic
- Web-Enabled
- Locally Hosted

It also has multi-user and multi-site functionality.

## Key Functionality in our Graphical Scheduler

### Utilise Your Resources

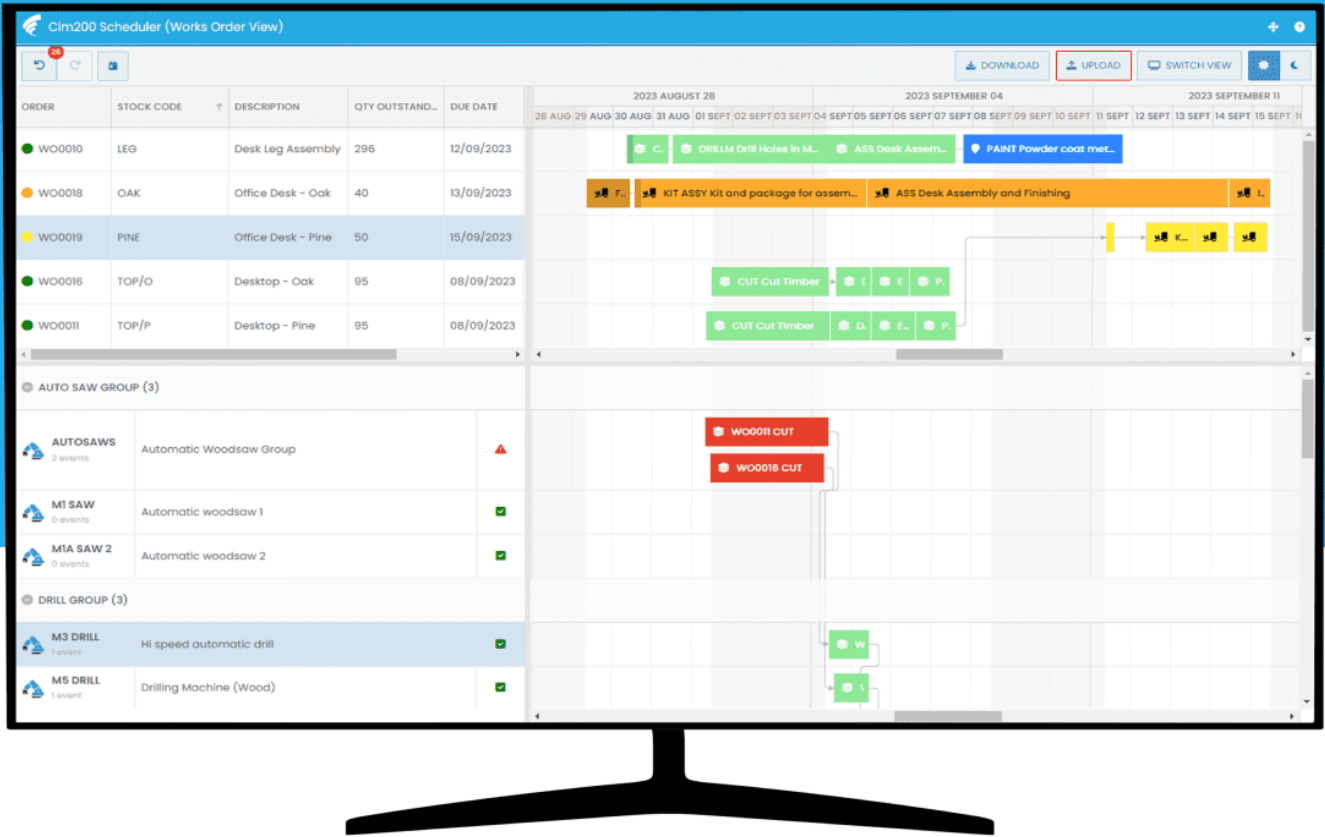
Group your resources and schedule production based on the capacity and availability of labour resources, machine resources or both.

### Easily Control Your Production

Quickly see shopfloor workload and take control of your production plan to improve your manufacturing efficiency.

### Prevent Resource Conflicts

Predict and resolve future resource conflicts and overloads to optimise the production plan to meet customer demands.



## Conflict Management

Resolve machine and labour resource conflicts in real-time. Conflicts are highlighted for user review and affected operations can be drag-and-dropped to alternative times or resources.

Receive on the spot feedback as to whether the results of the user interaction will create further resource conflicts or the works order will become overdue or at risk of becoming overdue. If the changes don't work, there is the option to undo them, providing 'what if' functionality for production planners.

## Works Order Planning

Schedule individual operations from the routings of the outstanding works orders present in Cim200.

The Works Order Planning view provides a complete overview of all works orders and their operations across the whole business. The system highlights late and at risk orders, as well as conflicting operations based on their: planned start dates, setup times, runtimes, delays and available capacity, ensures scheduling issues can be dealt with as soon as they are identified.

Resolve issues with works orders and operations to meet planning deadlines, before passing back the changes to Cim200 which updates your works orders.

## Resource Utilisation

Review colour-coded utilisation of resources by percentage to get an understanding of overloads for labour and machine resources, factory load imbalances and where they occur. The resource utilisation view is based on the individual calendars and resource capacity, with option for grouping similar resources able to carry out the same tasks.

## Additional Graphical Scheduler Features

### Dynamic Colour Coding

Colour coding is employed to highlight: late works orders, at-risk works orders, resource conflicts and resource overloads.

### Dependency Management

To avoid operations being scheduled out of sequence, the Cim200 Scheduler uses operation dependency.

This links operations from the same works order together with arrows directing from one operation to the next. If an operation is moved to a future date, any operations beyond this date will be automatically re-scheduled to later dates with any resource conflicts or affect to works order end dates highlighted immediately, alerting the production planner to take action.

### Locking Works Orders and Operations

Once a production plan has been finalised, firm it up by locking works orders and individual operations to ensure no scheduling changes can be made.

### Review Cim200 Works Order Details

View works order and operation details within the graphical scheduler including dates, linked customer orders, run-times, setup times, delays and routing notes.

### Schedule by Labour, Machine or Both

Choose whether labour resources, machine resources or both are considered when scheduling.

### Resource Grouping

Ensure processes are not carried out by or moved to an incorrect resource type, by grouping labour and machine resources. These are setup from within Cim50 and are taken into account by the graphical scheduler.

### Multiple Planning Calendars

Set up a single company wide calendar or individual calendars for each labour or machine resource to allow the scheduler to plan to the hours the factory and specific resources work.



# Customer Experience & Business Partners

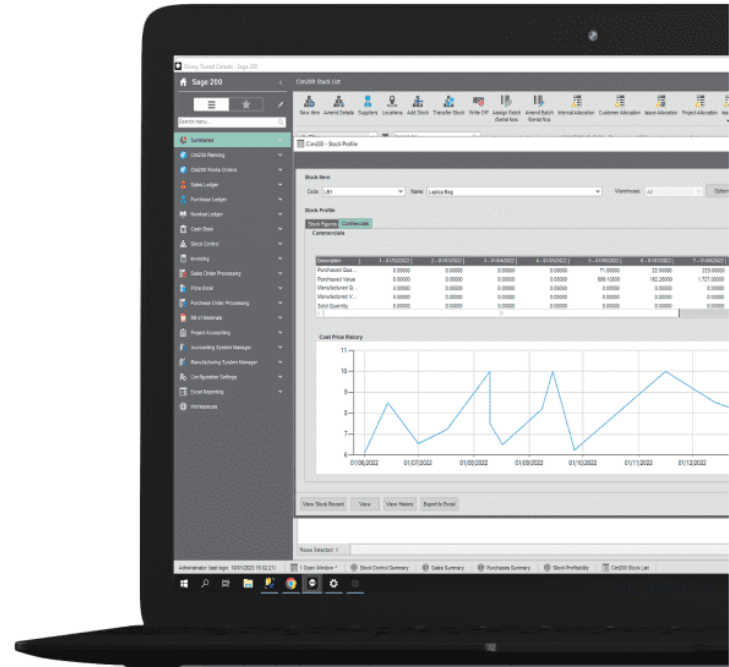
Our Cim200 solution is trusted by 300+ users in a variety of manufacturing sub verticals across the UK & Ireland.



“At the end of 2022 and into 2023 we changed our Software from Sage 50 to Sage 200 as our manufacturing software was no longer supported and we needed a system that combined our Accounts and Manufacturing Software.

CIM came in to start the preparation and installing the software in 2022 and we successfully went live January 2023. We still have other companies to transfer over in the future. Our consultant Steven was very professional and definitely knew the software very well and I would recommend CIM for any Sage products.”

-Michelle, Finance Controller at Sychem



## Our Business Partners

We have a network of accredited Cim200 business partners located across the UK and Ireland. They are all Sage partners and able to provide the full Cim200 and Sage 200 package.

They have all undergone rigorous training and are also kept up to date with any changes to the software's features or functionality. They are able to provide training and support for Cim200 as well as implement the entire system for you.

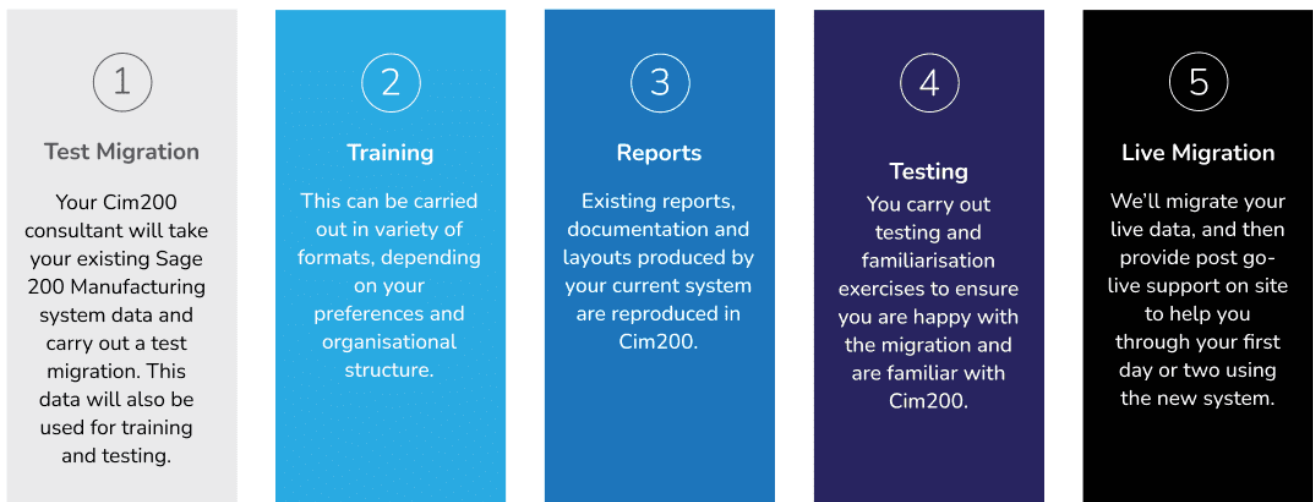


# Seamless Migration to Cim200

We have developed seamless migration tools for Sage 200 Manufacturing, Cim50 and Swan Manufacturing. One of the big challenges when changing your business critical systems is the time it takes and the effort required, especially when it comes to user buy-in.

This is why we've tried to simplify the whole process with the Cim200 Migration Utility. Simply stop working in your existing Manufacturing system at an agreed time (typically a Friday evening) and your Cim200 consultant will then migrate your data to Cim200. This typically takes a few minutes. They'll then interrogate the migration logs, and utilise a suite of reports to ensure everything migrated correctly, and you can then start working in your new system straight away.

## How does a typical migration project work?

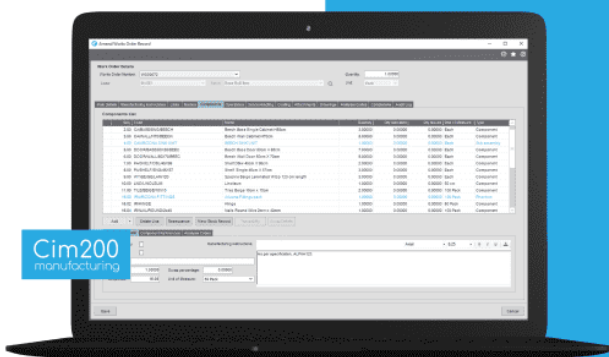


## Typical Migration Timelines

Depending on the system you are migrating from, a typical migration project would be carried out in the following timescales:

- Sage 200 Manufacturing: 4-8 weeks
- INFOR:Swan Manufacturing: 3-6 months
- Cim50: 3-9 months

If you are currently another manufacturing/ERP system, your existing data could be migrated using the various excel based import routines available as standard, or, alternatively, a custom migration program could be developed to suit your specific requirements.



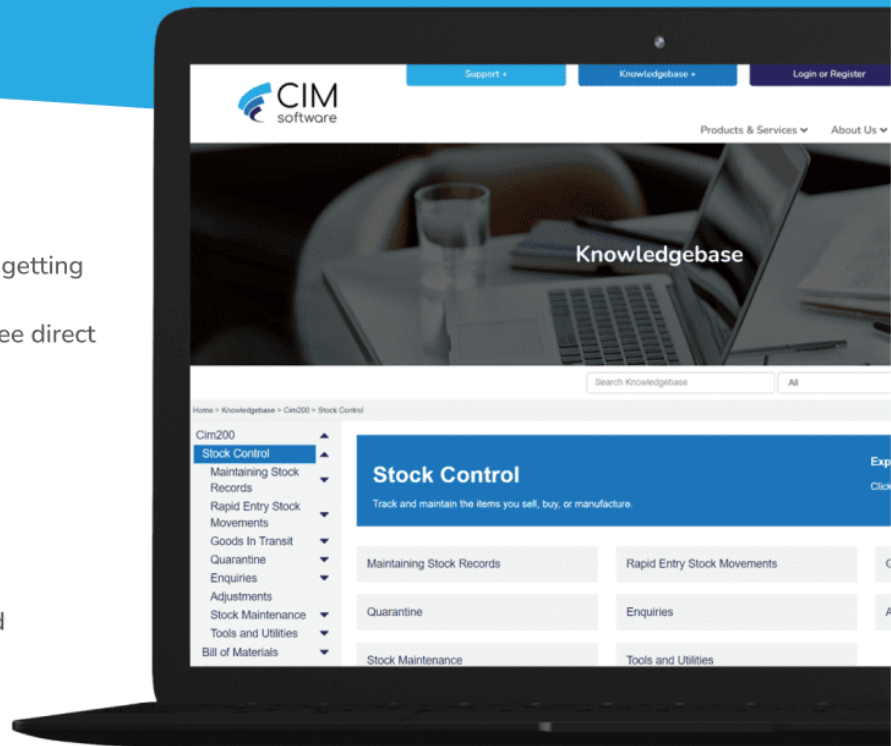
# Cim200 Support & Training

## Cim200 Support Channels

If you've got a question or query about your system, getting hold of your support team shouldn't be difficult or complicated. All Cim200 Business Partners offer three direct options for getting support:

- Raising a ticket on our website
- Calling our office directly
- Emailing our support team

The CIM Software website also has a thorough Knowledgebase that outlines all of the modules and features within Cim200.



## Cim200 Training

In order to get the most out of your software it's crucial that your team knows how to use it.

All Cim200 consultants are experienced at delivering high quality training sessions and will work with you to create a plan that works for your business.

We understand that not every business works in the same way and not every individual learns in the same way. That's why, depending on what works best for you and your team, Cim200 Business Partners are happy to provide the following training options:

### At Their Site

If you don't have the facilities or space to carry out training, you can request your sessions take place at your BP's site.

### Online

A new way of working. For those who prefer short bursts of learning training can be provided via video calls.

### At Your Site

If you've got a large team or don't want to travel, your BP can visit your site for in-person training sessions.



# Cim200 Add-Ons

CIM Software has collaborated with other award-winning Sage Developers to provide you with additional tools to enhance your Cim200 manufacturing processes.



Working with Draycir, we have incorporated their market leading document capture technology into our **Works Order module**, enabling users to save and interrogate shop floor paperwork within a works order.

Quickly and easily recall vital shop floor documentation, facilitating potential improvements in your job sign-off and quality control procedures.



**Spindle Document Capture** is a market leading document management solution for Sage 200.

Streamlining the day-to-day tasks of sending documents to your customers and suppliers, whilst removing the need for manual filling of paperwork. Capture incoming documents for instant access in Sage 200, as well as efficiently archiving for easy document retrieval.



We have worked with Datalinx Computer Systems to deliver a versatile Shop Floor Data Capture system.

This module utilises the speed, accuracy, and power of barcodes to provide you with the ability to process a range of stock and operational transactions through a seamless integration with Cim200 and core Sage modules.



**Warehouse Manager for Sage 200** is a powerful, flexible warehouse and inventory management system.

Working in real-time recording stock movements, using barcodes and wireless handhelds, Warehouse Manager delivers powerful functionality for today's fast-moving warehouse, from simple stock control through to complex true warehouse management.

## Cim200 Pricing & Licensing

Cim200 is available on a **monthly subscription basis**.

The subscription includes a licence to use the software, software updates and technical support and all six of the Cim200 modules are included as standard within the price.

Cim200 costs **£500.50 or €624 per month**.

- Prices are exclusive of VAT and are based on monthly subscription.

A Sage 200 package is also required. If you do not currently use Sage 200 Professional, your Business Partner can arrange this implementation and subscription for you too.



# Who are CIM Software?

CIM Software are Manufacturing Software Developers and IT Specialists based in Southampton, Hampshire.

We've been **trusted for over 30 years to deliver simple and effective IT solutions** to hundreds of SME customers across the UK and worldwide.

Specialising in Sage Accounts and Manufacturing solutions, we are a Sage Independent Software Vendor, having **developed our own manufacturing solutions including Cim50 for Sage 50 Accounts and Cim200 for Sage 200.**

With a **combined total of 120+ years worth of manufacturing industry experience**, your business is in safe hands with CIM Software.



1991

#### **CIM Services is founded.**

We started operating from our offices in Totton, Southampton and became Swan Manufacturing & Sage Line 100 business partners.

2003

#### **Sage 50 Manufacturing**

Sage releases Sage 50 Manufacturing which is quickly added to our product portfolio.

2012

#### **Sage Manufacturing Partner of the Year Awards**

CIM Services awarded Sage Manufacturing Partner of the Year every year except for 2 from 2003-2012. These awards ceased in 2013.

2017

#### **CIM Software Ltd created**

CIM Software was incorporated in January 2017 for the purposes of reselling our Cim50 Manufacturing software.

2017

#### **Cim50 Manufacturing Software released**

After 3 years of design and development, Cim50 was released to 3 beta testing sites.

2019

#### **Cim200 development began**

Following the success of Cim50 Manufacturing, we began developing Cim200 Manufacturing for Sage 200 in 2019.

2020

#### **Sage ISV Agreement**



CIM Software enter a partnership agreement with Sage, becoming a Sage Tech Partner Plus and Cim50 becomes the recommended replacement for Sage 50 Manufacturing.

2021

#### **Sage Innovation Award**

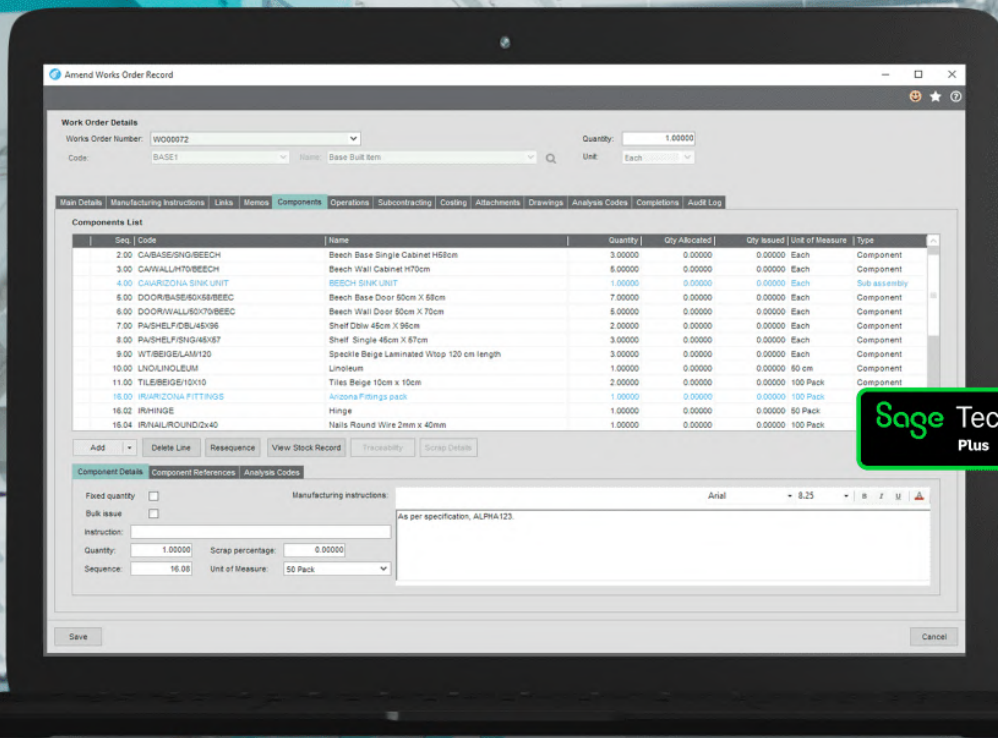


CIM Software wins 'Sage Solution Innovation Partner of the Year, 2021' for our Cim50 Carbon Footprint Calculator

2022

#### **Cim200 Manufacturing Software released**

Cim200 was released to the market in January 2022, incorporating functionality from both Sage 200 Manufacturing, INFOR:Swan Manufacturing and Cim50.



Get in Touch

If you are interested in finding out more, please contact us on **0344 880 6140** or email [info@cpio.co.uk](mailto:info@cpio.co.uk).

